

V:\17092_02_Big_Sky_Highway_64_Tiger_Grant_Survey\CADD_C3D\PRODUCTION_DWG\17092_02_SIGNAL_DETAILS.dwg, E1, 4/16/2021 5:24:25 PM, bates, 1:1

ELECTRICAL QUANTITY SUMMARY
SCHEDULE D: LITTLE COYOTE ROAD

ITEM NO.	MATERIAL	TOTAL	UNIT
*616323106	CONDUIT-STEEL 3/4 IN	110	LNFT
*616343909	CONDUIT-PLASTIC 3/4 IN	190	LNFT
616343920	CONDUIT-PLASTIC 2 IN	55	LNFT
616343930	CONDUIT-PLASTIC 3 IN	300	LNFT
**616783007	PULL BOX-COMPOSITE TYPE 2	4	EACH
616783008	PULL BOX-COMPOSITE TYPE 3	2	EACH
617000000	FOUNDATION-CONCRETE	14	CUYD
617033214	CABLE-COPPER 3AWG14-600V	180	LNFT
617033314	CABLE-COPPER 5AWG14-600V	550	LNFT
617033514	CABLE-COPPER 9AWG14-600V	600	LNFT
617123106	CONDUCTOR-COPPER AWG6-600V	150	LNFT
617123108	CONDUCTOR-COPPER AWG8-600V	675	LNFT
**617123110	CONDUCTOR-COPPER AWG10-600V	1120	LNFT
**617303300	HIGH EFFICACY LUMINAIRE LED	5	EACH
617333160	SERV ASSEMB-60 AMP	2	EACH
617503130	SIG-TRAF 3 COL-1 WAY 12-12-12	5	EACH
617513125	SIG TRAF 4 COL 1 W 12-12-12-12	2	EACH
617553020	SIG-PEDESTRIAN TYPE 2	2	EACH
617233030	CONTROLLER-CAB PEDESTAL TYPE P (OWNER SUPPLIED)	1	EACH
617605081	CONTLR/TRAF-ACTUAT TYPE 8-A (OWNER SUPPLIED)	1	EACH
617673100	SIG STANDARD TYPE 1-100	1	EACH
617715053	SIG STANDARD TYPE 3-A-500-3	1	EACH
617715097	SIG STANDARD TYPE 3-A-900-7	2	EACH
617763500	DETECTOR-RADAR/PRESENCE	5	EACH
617781000	REMOVE AND SALVAGE MISC ELECTRICAL	LS	LS
617903255	PUSH BUTTON-PEDESTRIAN-TACTILE	2	EACH
617909502	EMER PRE-EMPT DET CABLE	775	LNFT
617909505	EMER PRE-EMPTION DET HEAD	3	EACH

* This bid item is for the pedestrian underpass lighting.
** The quantities for this bid item include quantities for the pedestrian underpass lighting.

QUANTITY SUMMARY
NO SCALE



GALLATIN COUNTY
STATE OF MONTANA

17092_02_SIGNAL_DETAILS.dwg
10/23/2020
3:45 PM BMB/CMK

DESIGNED BY BMB/CMK/JS/NL/JMC
REVIEWED BY TRP/DS/MLF/DJC
CHECKED BY TRP/DS/MLF/DJC

ELECTRICAL QUANTITY SUMMARY
GALLATIN COUNTY, MADISON COUNTY

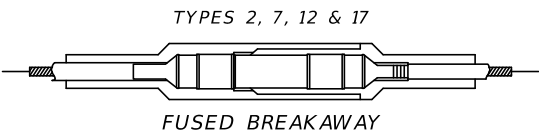
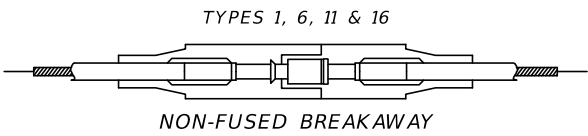
FOR BIDDING

MONTANA HIGHWAY 64 (LONE MOUNTAIN TRAIL)

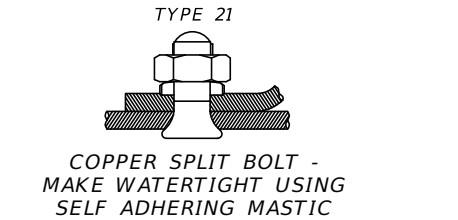
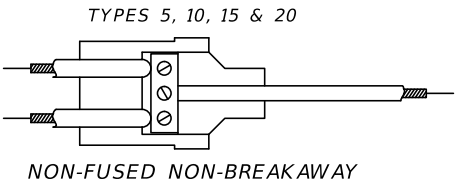
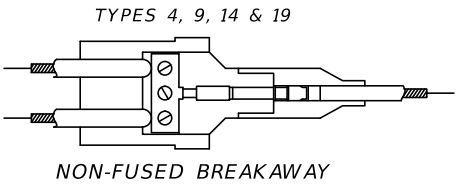
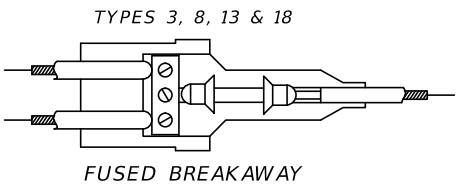
SANDERSON STEWART

SHEET E1

WATERTIGHT CONNECTORS



IDENTITY NO.	DESCRIPTIVE SYMBOL & WIRE SIZES
1	8
2	8-10
3	8-10
4	8
5	8
6	6
7	6-10
8	6-10
9	6
10	6
11	4
12	4-10
13	4-10
14	4
15	4
16	10
17	10-10
18	10-10
19	10
20	10
21	VARIES VARIES

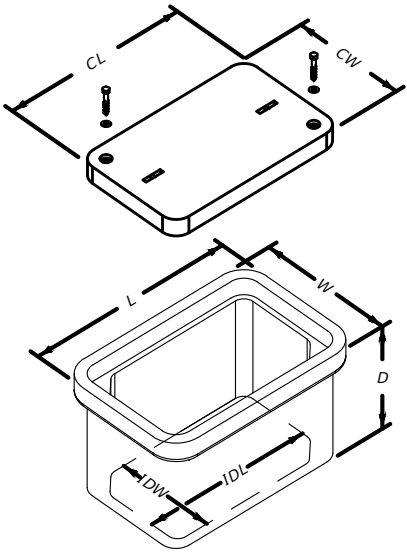


PROVIDE A PLUG AND RECEPTACLE HOUSED IN WATER-RESISTANT, SYNTHETIC RUBBER CAPABLE OF BURIAL IN THE GROUND OR INSTALLATION IN SUNLIGHT. THE HOUSING, CONSISTING OF 2 SECTIONS, PROVIDES A WATERTIGHT SEAL AROUND THE CABLE AND A WATERTIGHT SEAL BETWEEN THE TWO SECTIONS AT THE POINT OF DISCONNECTION. SUPPLY EACH KIT WITH SUFFICIENT SILICONE COMPOUND TO LUBRICATE METAL PARTS AND THE RUBBER HOUSINGS FOR EASY ASSEMBLY.

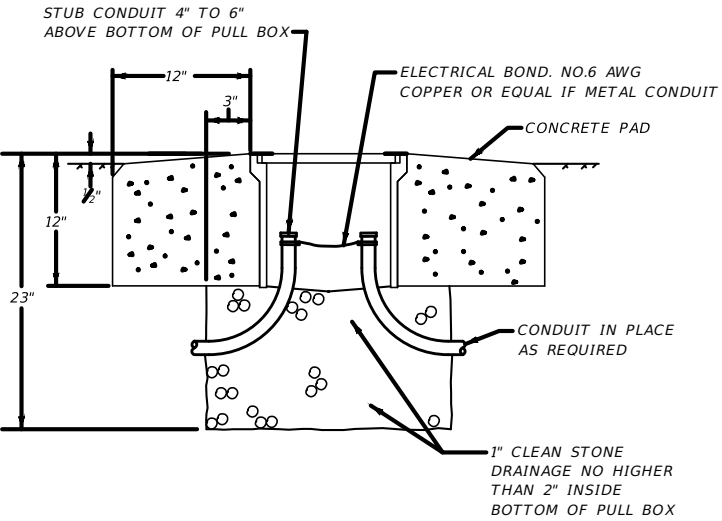
WHERE INDICATED, CRIMP A COPPER PIN AND A COPPER RECEPTACLE TO THE CABLE. THE RECEPTACLE IS TO ESTABLISH CONTACT PRESSURE WITH THE PIN THROUGH THE USE OF A COPPER BERYLLIUM SPRING AND BE EQUIPPED WITH A DISPOSABLE MOUNTING PIN. THE PIN IS TO BE CONSTRUCTED OF AT LEAST HALF-HARD MATERIAL. THE CRIMPING PORTION IS TO BE FULLY ANNEALED WHILE THE REST OF THE PIN IS MAINTAINED IN ITS ORIGINAL STATE OF HARDNESS. THE RECEPTACLE IS TO BE FULLY ANNEALED. THE PIN AND RECEPTACLE ARE TO LOCK TOGETHER SO THE CONNECTION IS MAINTAINED WHEN A MINIMUM FORCE OF 20 POUNDS TENSION IS APPLIED TO THE ATTACHED CABLES.

PROVIDE FUSED CONNECTOR KITS CONTAINING A PAIR OF SPRING LOADED 90% CONDUCTIVITY CONTACTS FOR GRIPPING A STANDARD MIDGET FERRULE TYPE FUSE. THE CONTACTS MUST BE FULLY ANNEALED AND ADAPTED TO BE CRIMPED TO THE CABLE.

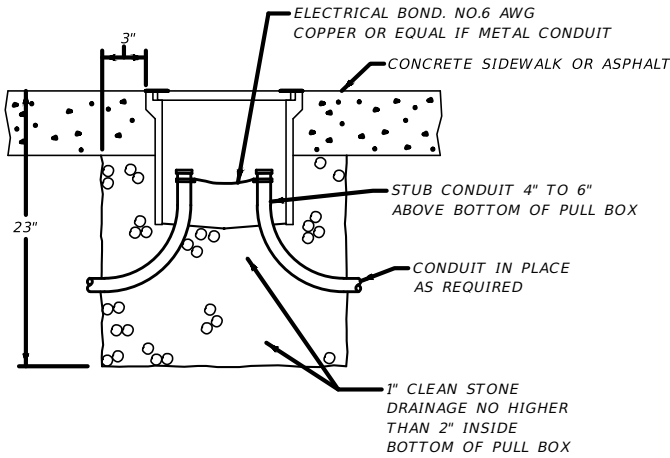
WATERTIGHT CONNECTORS
NO SCALE



PULL BOX - COMPOSITE MINIMUM DIMENSIONS		
TYPE 1	TYPE 2	TYPE 3
L = 20"	L = 25"	L = 32"
W = 13"	W = 15"	W = 19"
D = 12"	D = 12"	D = 12"
IDL = 17"	IDL = 21"	IDL = 28"
IDW = 10"	IDW = 11"	IDW = 15"
CL = 18"	CL = 23"	CL = 30"
CW = 11"	CW = 13"	CW = 17"



PULL BOX INSTALLED IN DIRT



PULL BOX INSTALLED IN A SIDEWALK OR ASPHALT

PULL BOX-COMPOSITE
TYPE 1,2 & 3
NO SCALE

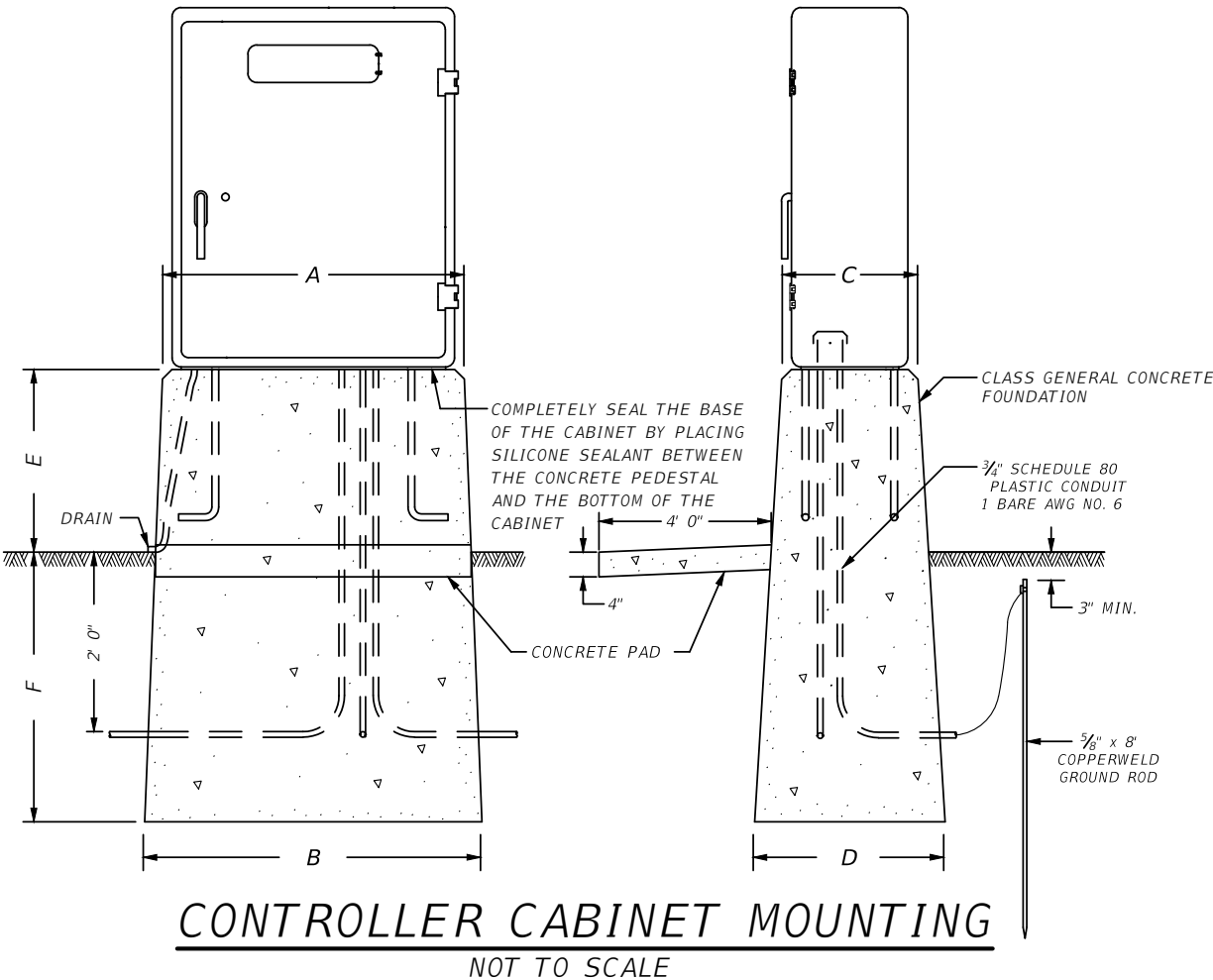
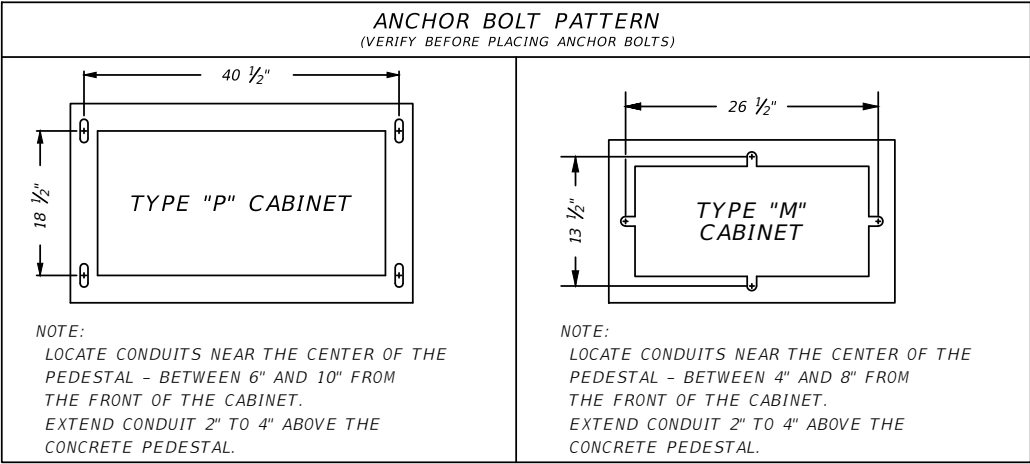
SANDERSON STEWART



FOR BIDDING

MONTANA HIGHWAY 64 (LONE MOUNTAIN TRAIL)

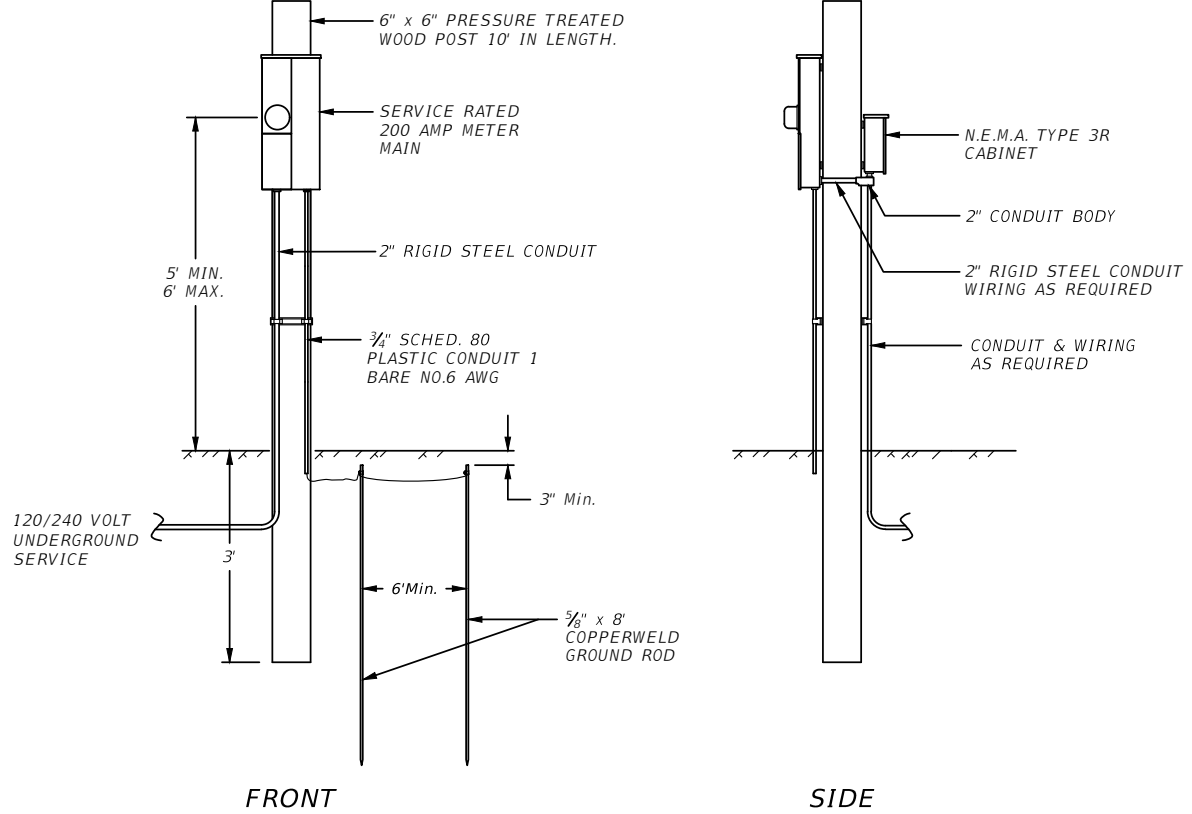
SHEET E2



CONTROLLER CABINET MOUNTING
NOT TO SCALE

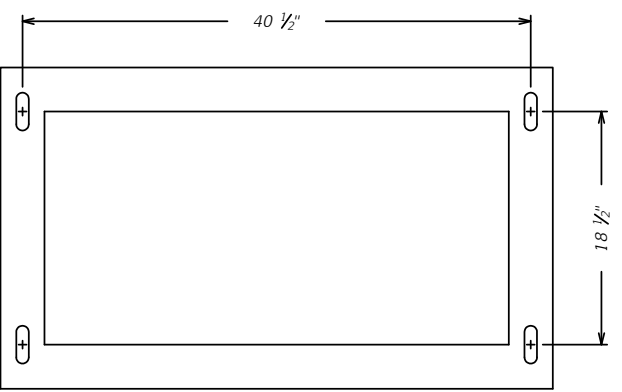
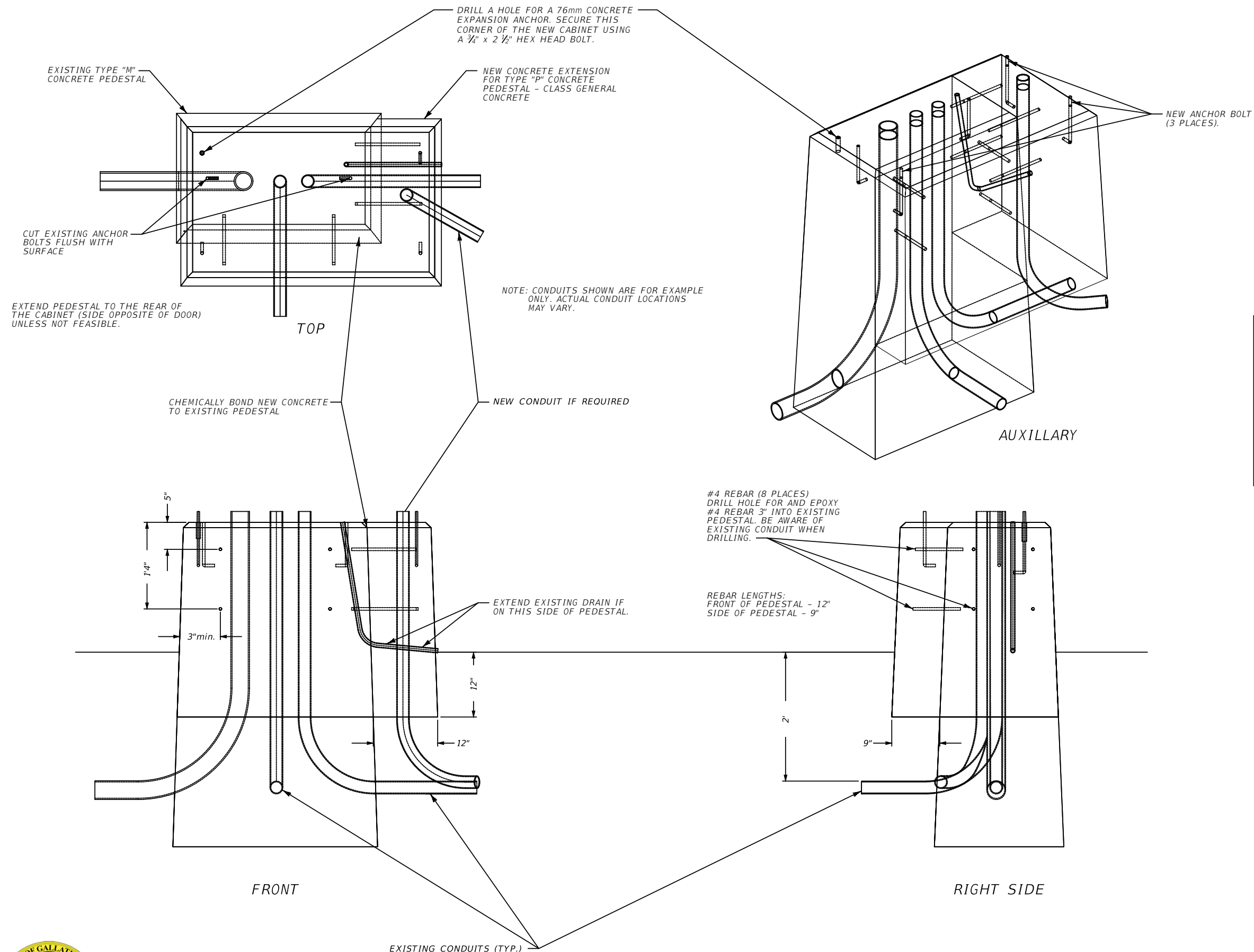
CONCRETE PEDESTAL DIMENSIONS						
	A	B	C	D	E	F
TYPE M	2' 10"	3' 2"	1' 7"	2' 0"	2' 0"	3' 0"
TYPE P	4' 0"	4' 4"	2' 4"	2' 9"	2' 0"	3' 0"

TYPICAL CABINET DIMENSIONS			
	WIDTH	HEIGHT	DEPTH
TYPE M	2' 6"	4' 2"	1' 5"
TYPE P	3' 8"	4' 6"	2' 2"

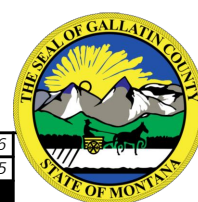


UNDERGROUND SERVICE ASSEMBLY DETAIL
NOT TO SCALE





**ANCHOR BOLT PATTERN
FOR TYPE "P" CABINET**
(VERIFY BEFORE PLACING
ANCHOR BOLTS)



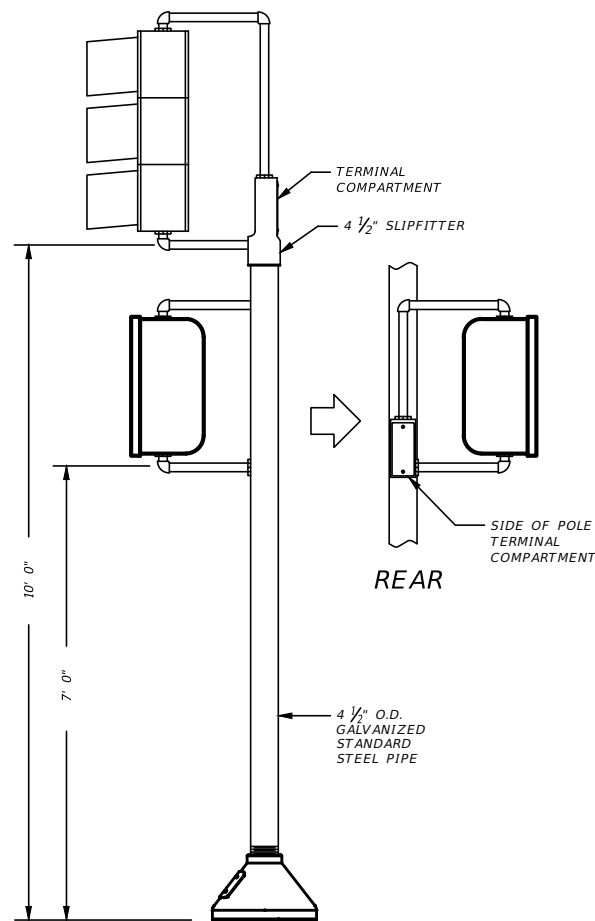
GALLATIN COUNTY STATE OF MONTANA	17092_02_SIGNAL_DETAILS.dwg 10/23/2020 3:45 PM	DESIGNED BY BMB/CMK/JS/NL/JMC REVIEWED BY TRP/DS/MLF/DJC CHECKED BY TRP/DS/MLF/DJC	BMB/CMK
-------------------------------------	--	--	---------

ELECTRICAL DETAILS	GALLATIN COUNTY, MADISON COUNTY
--------------------	---------------------------------

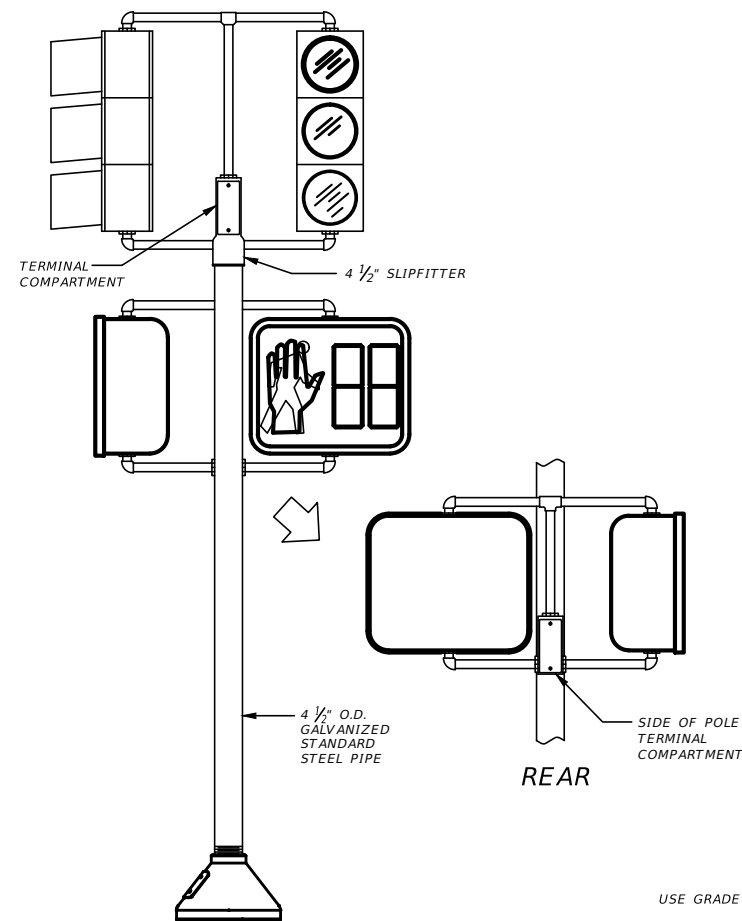
FOR BIDDING

MONTANA HIGHWAY 64 (LONE MOUNTAIN TRAIL)

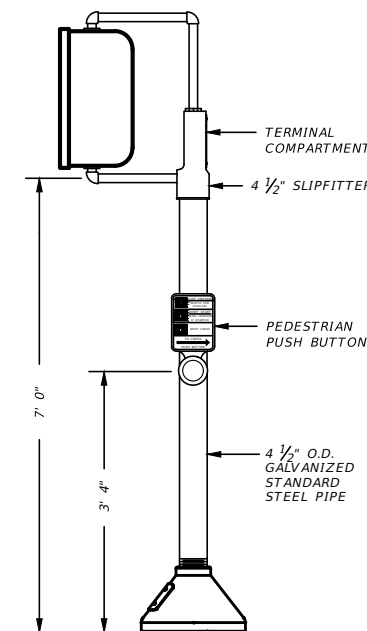
SANDERSON STEWART



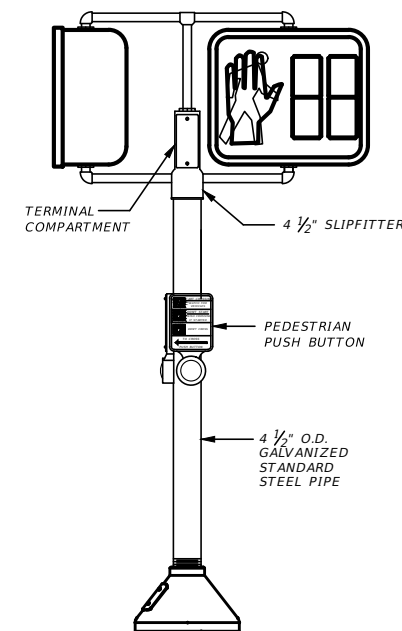
TYPE I-140



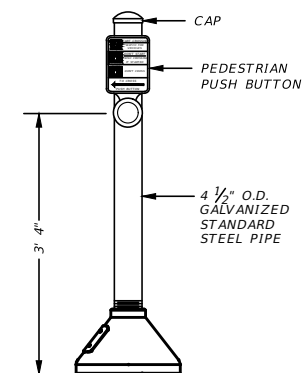
TYPE I-160



TYPE I-100

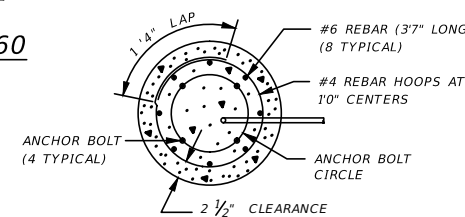


TYPE I-120

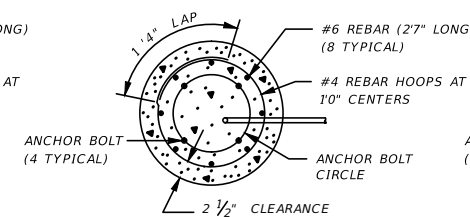


TYPE I-80

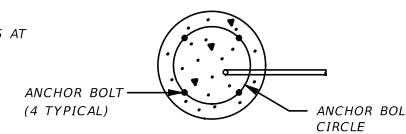
USE GRADE 60 REINFORCING STEEL



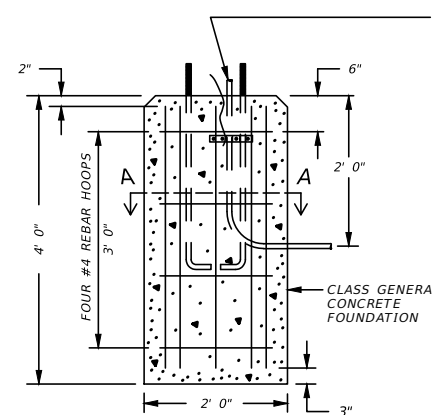
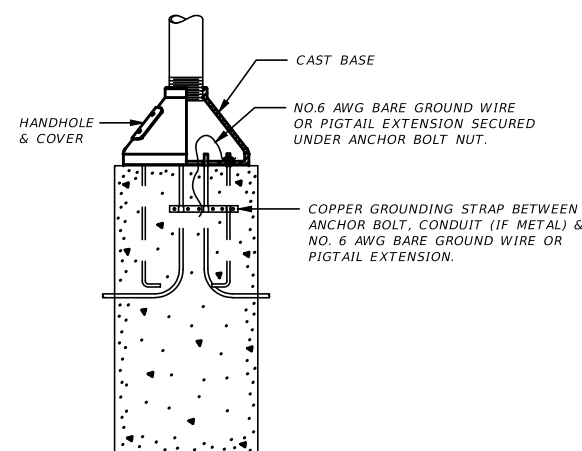
SECTION A-A



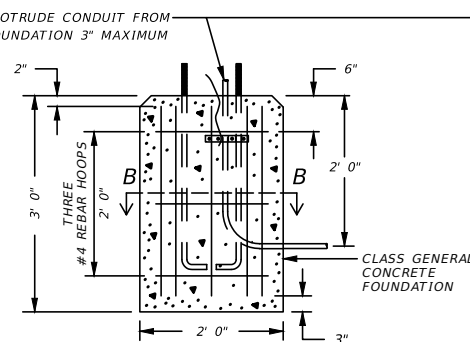
SECTION B-B



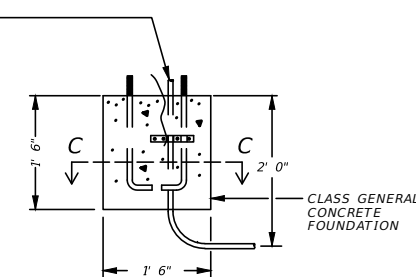
SECTION C-C



TYPE I-160 & I-140



TYPE I-120 & I-100

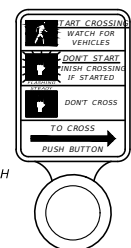


TYPE I-80

ARROW TO BE LEFT OR RIGHT, OR BOTH AS REQUIRED.

5" x 7 3/4" ALUMINUM SIGN, BLACK LETTERS ON WHITE BACKGROUND.

BACK OF CASTING SHAPED TO FIT CURVATURE OF POST. FOR MOUNTING ON PEDESTRIAN PUSH BUTTON POST, FORM CASTING TO FIT TOP OF POST.



PEDESTRIAN PUSH BUTTON

TYPE I SIGNAL STANDARDS,
FOUNDATION DETAILS &
PEDESTRIAN PUSH BUTTONS
NO SCALE

TYPICAL OF FOUNDATIONS



GALLATIN COUNTY
STATE OF MONTANA

17092_02_SIGNAL_DETAILS.dwg
10/23/2020
3:45 PM BMB/CMK

DESIGNED BY BMB/CMK/JS/NL/JMC
REVIEWED BY TRP/DS/MLF/DJC
CHECKED BY TRP/DS/MLF/DJC

ELECTRICAL DETAILS

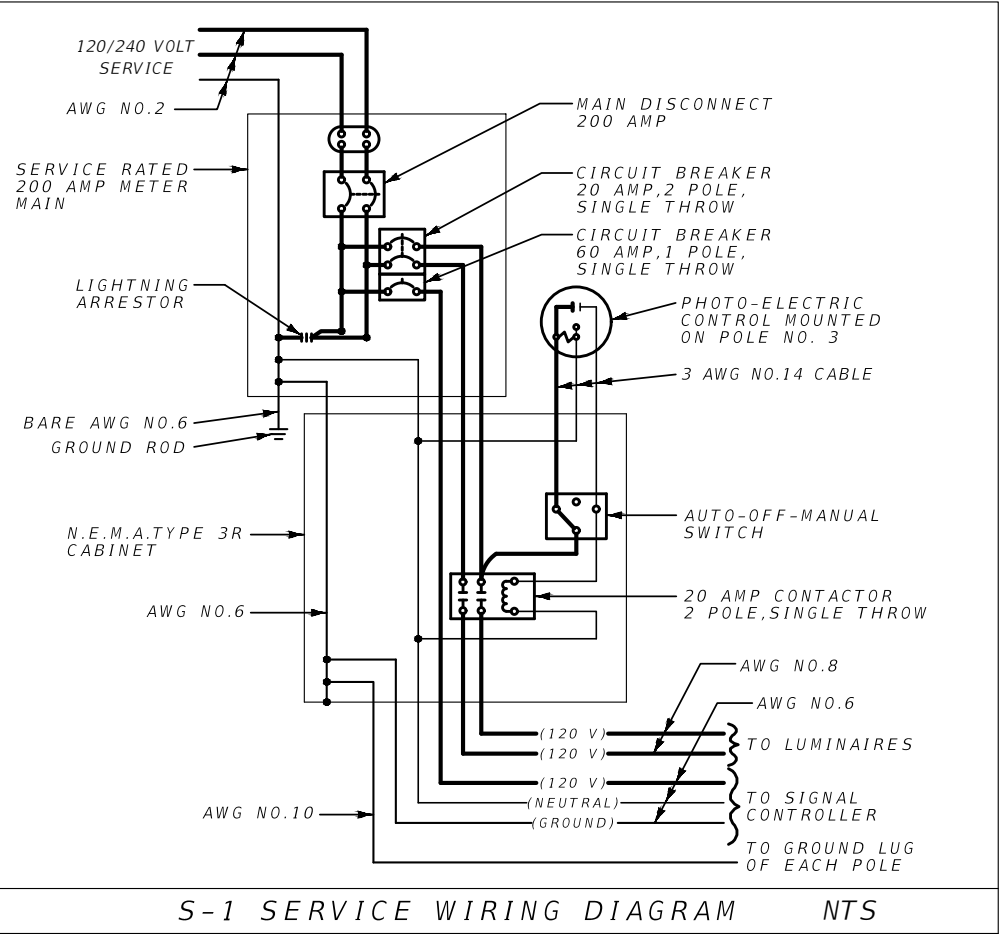
GALLATIN COUNTY, MADISON COUNTY

FOR BIDDING

MONTANA HIGHWAY 64 (LONE MOUNTAIN TRAIL)

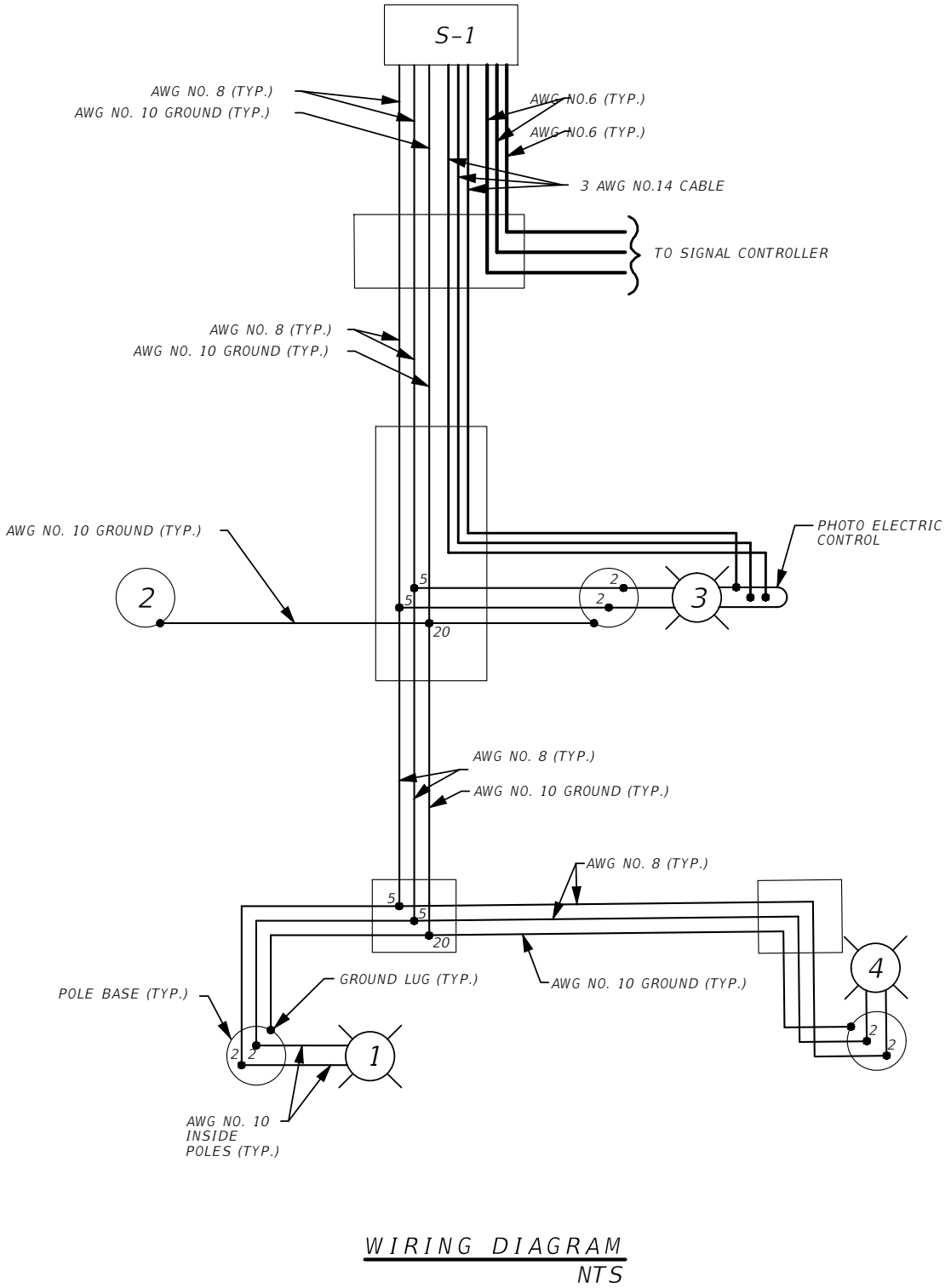
SANDERSON STEWART

SHEET E6



18 - INDICATES NEW WATERTIGHT CONNECTOR, SEE DETAIL DRAWING ON SHEET E-2

SUPPLY FUSED CONNECTORS THAT ARE MIDGET FERRULE TYPE RATED AT 6 AMPS FOR LUMINAIRES.



GALLATIN COUNTY
STATE OF MONTANA

17092_02_SIGNAL_DETAILS.dwg
10/23/2020

DESIGNED BY BMB/CMK/JS/NL/JMC
REVIEWED BY TRP/DS/MLF/DJC
CHECKED BY TRP/DS/MLF/DJC

ELECTRICAL WIRING DIAGRAM
GALLATIN COUNTY, MADISON COUNTY

FOR BIDDING

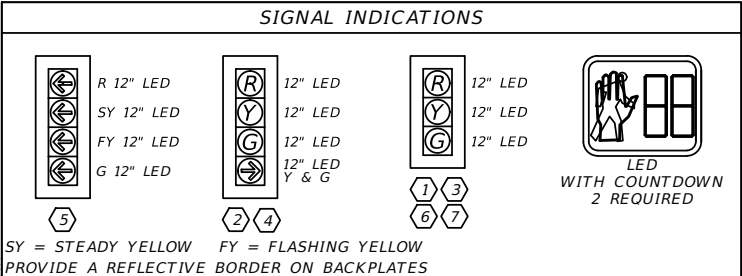
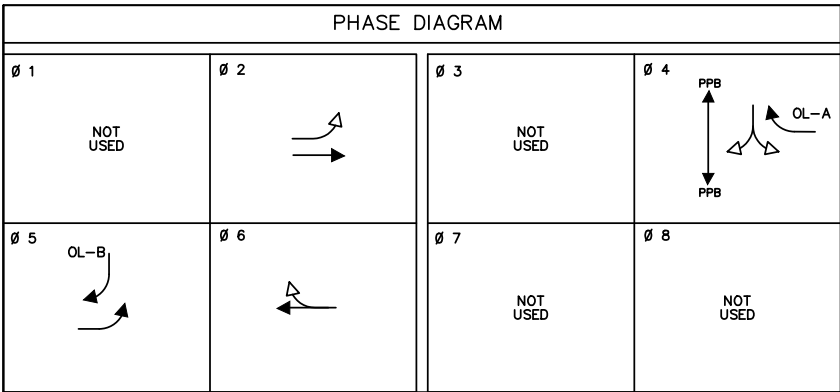
MONTANA HIGHWAY 64 (LONE MOUNTAIN TRAIL)

SANDERSON STEWART

SHEET E7

POLE SCHEDULE												
POLE NO.	ITEM NO.	TYPE	LINE	STATION	OFFSET (Q POLE)	TYPE POLE BASE	FOUNDATION DIA. X DEPTH	PEDESTRIAN PUSH BUTTON LEFT ARROW	PEDESTRIAN PUSH BUTTON RIGHT ARROW	SIGNAL MAST ARM	LUMINAIRE MAST ARM	LUMINAIRE HEIGHT
1	617 715 053	3-A-500-3	HWY 64	15+88.75	39.72' RT	ANCHOR	3'0"x12'0"	1		25'	10'	45'
2	617 673 100	1-100	HWY 64	15+77.92	40.00' LT	BREAKAWAY	2'0"x3'0"	1				
4	617 715 097	3-A-900-7	HWY 64	16+94.15	40.67' RT	ANCHOR	4'0"x12'0"			45'	10'	45'
3	617 715 097	3-A-900-7	HWY 64	15+89.52	52.78' LT	ANCHOR	4'0"x12'0"			45'	10'	45'

* NEW HIGH EFFICACY LED TYPE II DIST.



SYMBOL LEGEND	
	NEW PULL BOX
	EXISTING PULL BOX
	NEW SIGNAL POLE, BASE & MAST ARMS
	EXISTING SIGNAL POLE & BASE
	NEW VEHICLE SIGNAL INDICATION
	EXISTING VEHICLE SIGNAL INDICATION
	RADAR DETECTION UNIT
	PEDESTRIAN SIGNAL INDICATOR
	NEW LUMINAIRE ON SIGNAL STD.
	SIGNAL POLE NUMBER
	VEHICLE IND. REFERENCE NO.
	PEDESTRIAN IND. REFERENCE NO.
	NEW CONDUIT & WIRE
	EMERGENCY PREEMPTION DETECTOR
	PED. PUSH BUTTON (LEFT OR RIGHT ARROW)

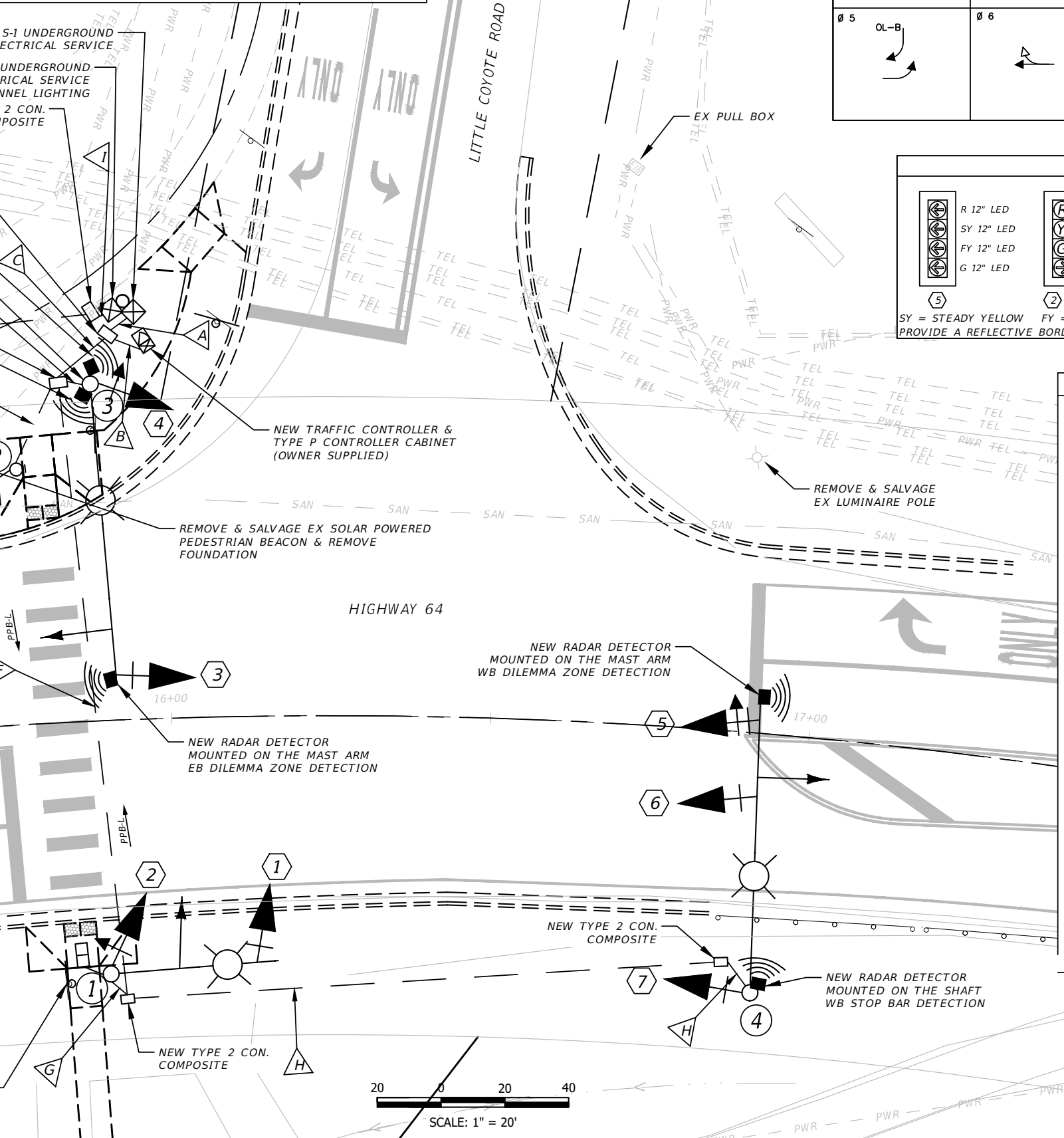
CONDUIT AND WIRE SCHEDULE	
A	1 OF 2" PLASTIC CONDUIT 3 OF AWG NO. 6 CONDUCTOR (CONTROLLER) 2 OF AWG NO. 8 CONDUCTOR (LIGHTING) 1 OF AWG NO. 10 CONDUCTOR (GROUND) 1 OF 3 AWG NO. 14 SIGNAL CABLE (P.E.C.)
B	2 OF 3.0" PLASTIC CONDUIT 1 OF 3 AWG NO. 14 SIGNAL CABLE (POLE#3-SPARE) 3 OF 5 AWG NO. 14 SIGNAL CABLE 3 OF 9 AWG NO. 14 SIGNAL CABLE 3 OF EMERGENCY PREEMPTION CABLE 5 OF RADAR DETECTOR CABLE 3 OF AWG NO. 6 CONDUCTOR (CONTROLLER)
C	2 OF 3.0" PLASTIC CONDUIT 1 OF 3 AWG NO. 14 SIGNAL CABLE (POLE#3- SPARE) 3 OF 5 AWG NO. 14 SIGNAL CABLE 3 OF 9 AWG NO. 14 SIGNAL CABLE 3 OF EMERGENCY PREEMPTION CABLE 5 OF RADAR DETECTOR CABLE 1 OF AWG NO. 10 CONDUCTOR (GROUND) 2 OF AWG NO. 8 CONDUCTOR (LIGHTING) 1 OF 3 AWG NO. 14 SIGNAL CABLE (P.E.C.)
D	1 OF 3" PLASTIC CONDUIT 1 OF 3 AWG NO. 14 SIGNAL CABLE (POLE#3- SPARE) 1 OF 9 AWG NO. 14 SIGNAL CABLE 1 OF EMERGENCY PREEMPTION CABLE 3 OF RADAR DETECTOR CABLE 2 OF AWG NO. 8 CONDUCTOR (LIGHTING) 1 OF AWG NO. 10 CONDUCTOR (GROUND) 1 OF 3 AWG NO. 14 SIGNAL CABLE (P.E.C.)
E	1 OF 2" PLASTIC CONDUIT 1 OF 5 AWG NO. 14 SIGNAL CABLE 1 OF AWG NO. 10 CONDUCTOR (GROUND)
F	1 OF 3" PLASTIC CONDUIT 2 OF 5 AWG NO. 14 SIGNAL CABLE 2 OF 9 AWG NO. 14 SIGNAL CABLE 2 OF EMERGENCY PREEMPTION CABLE 2 OF RADAR DETECTOR CABLE 2 OF AWG NO. 8 CONDUCTOR (LIGHTING) 1 OF AWG NO. 10 CONDUCTOR (GROUND)
G	1 OF 2" PLASTIC CONDUIT 1 OF 5 AWG NO. 14 SIGNAL CABLE 1 OF 9 AWG NO. 14 SIGNAL CABLE 1 OF EMERGENCY PREEMPTION CABLE 2 OF AWG NO. 8 CONDUCTOR (LIGHTING) 1 OF AWG NO. 10 CONDUCTOR (GROUND)
H	1 OF 3" PLASTIC CONDUIT 1 OF 5 AWG NO. 14 SIGNAL CABLE 1 OF 9 AWG NO. 14 SIGNAL CABLE 1 OF EMERGENCY PREEMPTION CABLE 2 OF RADAR DETECTOR CABLE 2 OF AWG NO. 8 CONDUCTOR (LIGHTING) 1 OF AWG NO. 10 CONDUCTOR (GROUND)
I	1 OF 0.75" PLASTIC CONDUIT 2 OF AWG NO. 10 CONDUCTOR (LIGHTING) 1 OF AWG NO. 10 CONDUCTOR (GROUND)

CONDUIT SCHEDULE					NUMBER OF NEW AWG CONDUCTORS & WIRES							
Run Desig.	No. of Conduits	Size	Material	Installation Method	AWG No. 6	AWG No. 8	AWG No. 10	9c #14	5c #14	3c #14	PREEMPTION CABLE	RADAR DET. CABLE
A	1	2"	PVC	TRENCH	3	2	1			1		
B	2	3"	PVC	TRENCH	3			3	3	1	3	5
C	2	3"	PVC	TRENCH		2	1	3	3	2	3	5
D	1	3"	PVC	TRENCH		2	1	1		2	1	3
E	1	2"	PVC	TRENCH			1		1			
F	1	3"	PVC	PUSH		2	1	2	2		2	2
G	1	2"	PVC	TRENCH		2	1	1	1		1	
H	1	3"	PVC	TRENCH		2	1	1	1		1	2
I	1	0.75"	PVC	TRENCH				3				



GALLATIN COUNTY
STATE OF MONTANA
17092_02_SIGNAL_PROD.dwg
10/23/2020
3:45 PM
BMB/CMK

REMOVE & SALVAGE EX SOLAR POWERED PEDESTRIAN BEACON & REMOVE FOUNDATION



ELECTRICAL PLAN SHEET
GALLATIN COUNTY, MADISON COUNTY

FOR BIDDING

MONTANA HIGHWAY 64 (LONE MOUNTAIN TRAIL)



SIGNAL INDICATIONS

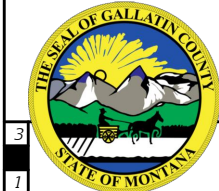
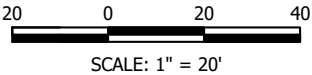
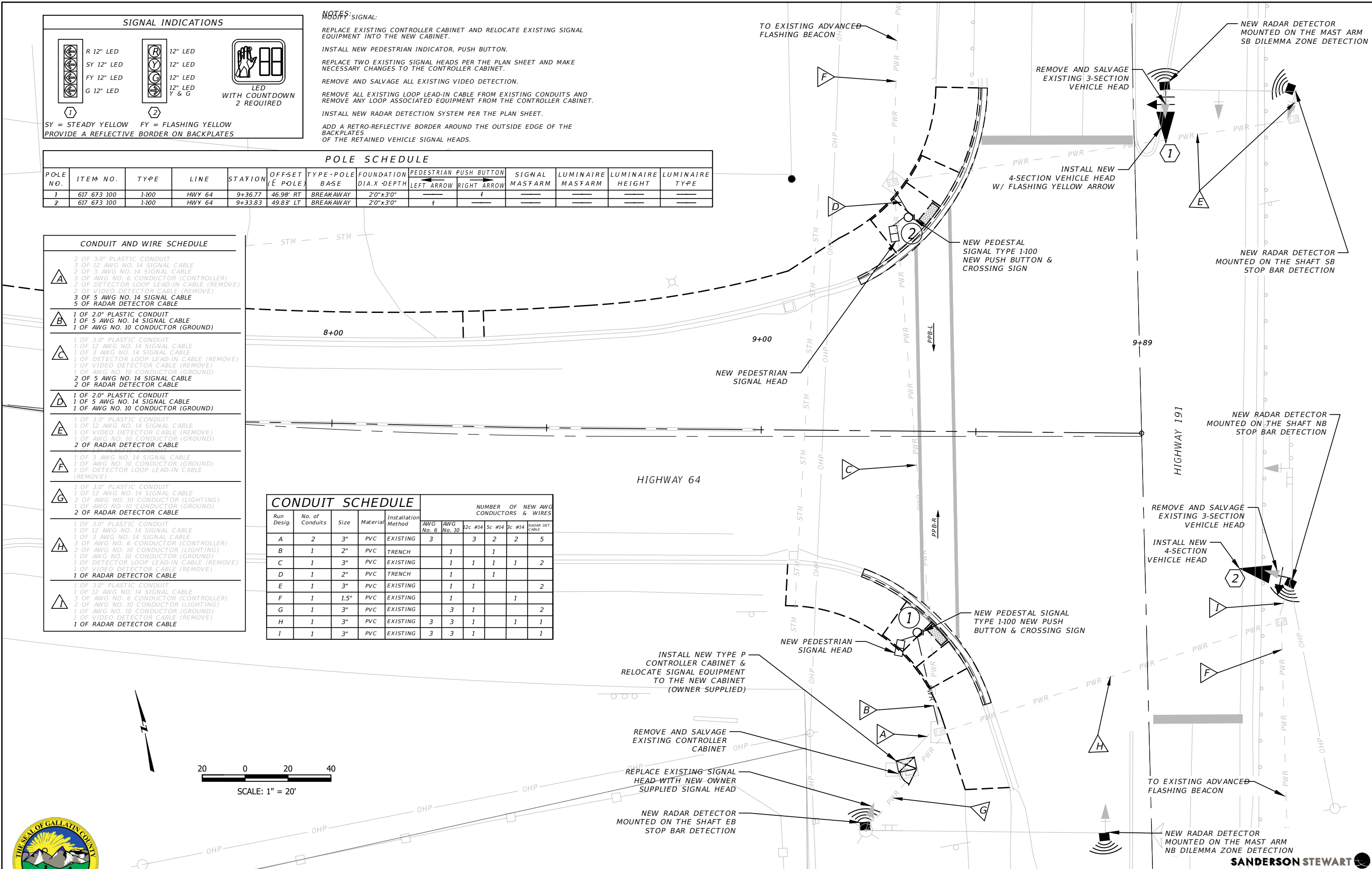
SY = STEADY YELLOW FY = FLASHING YELLOW
PROVIDE A REFLECTIVE BORDER ON BACKPLATES

NOTES:
MODIFY SIGNAL:
REPLACE EXISTING CONTROLLER CABINET AND RELOCATE EXISTING SIGNAL EQUIPMENT INTO THE NEW CABINET.
INSTALL NEW PEDESTRIAN INDICATOR, PUSH BUTTON.
REPLACE TWO EXISTING SIGNAL HEADS PER THE PLAN SHEET AND MAKE NECESSARY CHANGES TO THE CONTROLLER CABINET.
REMOVE AND SALVAGE ALL EXISTING VIDEO DETECTION.
REMOVE ALL EXISTING LOOP LEAD-IN CABLE FROM EXISTING CONDUITS AND REMOVE ANY LOOP ASSOCIATED EQUIPMENT FROM THE CONTROLLER CABINET.
INSTALL NEW RADAR DETECTION SYSTEM PER THE PLAN SHEET.
ADD A RETRO-REFLECTIVE BORDER AROUND THE OUTSIDE EDGE OF THE BACKPLATES OF THE RETAINED VEHICLE SIGNAL HEADS.

POLE SCHEDULE													
POLE NO.	ITEM NO.	TYPE	LINE	STATION	OFFSET (E POLE)	TYPE POLE BASE	FOUNDATION DIA. X DEPTH	PEDESTRIAN PUSH BUTTON		SIGNAL MAST ARM	LUMINAIRE MAST ARM	LUMINAIRE HEIGHT	LUMINAIRE TYPE
								LEFT ARROW	RIGHT ARROW				
1	617 673 100	1-100	HWY 64	9+36.77	46.98' RT	BREAKAWAY	2'0"x3'0"	—	—	—	—	—	—
2	617 673 100	1-100	HWY 64	9+33.83	49.83' LT	BREAKAWAY	2'0"x3'0"	—	—	—	—	—	—

CONDUIT AND WIRE SCHEDULE	
A	2 OF 3.0" PLASTIC CONDUIT 3 OF 12 AWG NO. 14 SIGNAL CABLE 2 OF 3 AWG NO. 14 SIGNAL CABLE 3 OF AWG NO. 6 CONDUCTOR (CONTROLLER) 2 OF DETECTOR LOOP LEAD-IN CABLE (REMOVE) 2 OF VIDEO DETECTOR CABLE (REMOVE) 3 OF 5 AWG NO. 14 SIGNAL CABLE 5 OF RADAR DETECTOR CABLE
B	1 OF 2.0" PLASTIC CONDUIT 1 OF 5 AWG NO. 14 SIGNAL CABLE 1 OF AWG NO. 10 CONDUCTOR (GROUND)
C	1 OF 3.0" PLASTIC CONDUIT 1 OF 12 AWG NO. 14 SIGNAL CABLE 1 OF 3 AWG NO. 14 SIGNAL CABLE 1 OF DETECTOR LOOP LEAD-IN CABLE (REMOVE) 1 OF VIDEO DETECTOR CABLE (REMOVE) 1 OF AWG NO. 10 CONDUCTOR (GROUND) 2 OF 5 AWG NO. 14 SIGNAL CABLE 2 OF RADAR DETECTOR CABLE
D	1 OF 2.0" PLASTIC CONDUIT 1 OF 5 AWG NO. 14 SIGNAL CABLE 1 OF AWG NO. 10 CONDUCTOR (GROUND)
E	1 OF 3.0" PLASTIC CONDUIT 1 OF 12 AWG NO. 14 SIGNAL CABLE 1 OF VIDEO DETECTOR CABLE (REMOVE) 1 OF AWG NO. 10 CONDUCTOR (GROUND) 2 OF RADAR DETECTOR CABLE
F	1 OF 3 AWG NO. 14 SIGNAL CABLE 1 OF AWG NO. 10 CONDUCTOR (GROUND) 1 OF DETECTOR LOOP LEAD-IN CABLE (REMOVE)
G	1 OF 3.0" PLASTIC CONDUIT 1 OF 12 AWG NO. 14 SIGNAL CABLE 2 OF AWG NO. 10 CONDUCTOR (LIGHTING) 1 OF AWG NO. 10 CONDUCTOR (GROUND) 2 OF RADAR DETECTOR CABLE
H	1 OF 3.0" PLASTIC CONDUIT 1 OF 12 AWG NO. 14 SIGNAL CABLE 3 OF AWG NO. 6 CONDUCTOR (CONTROLLER) 2 OF AWG NO. 10 CONDUCTOR (LIGHTING) 1 OF AWG NO. 10 CONDUCTOR (GROUND) 1 OF DETECTOR LOOP LEAD-IN CABLE (REMOVE) 1 OF VIDEO DETECTOR CABLE (REMOVE) 1 OF RADAR DETECTOR CABLE
I	1 OF 3.0" PLASTIC CONDUIT 1 OF 12 AWG NO. 14 SIGNAL CABLE 3 OF AWG NO. 6 CONDUCTOR (CONTROLLER) 2 OF AWG NO. 10 CONDUCTOR (LIGHTING) 1 OF AWG NO. 10 CONDUCTOR (GROUND) 1 OF VIDEO DETECTOR CABLE (REMOVE) 1 OF RADAR DETECTOR CABLE

CONDUIT SCHEDULE					NUMBER OF NEW AWG CONDUCTORS & WIRES					
Run Desig.	No. of Conduits	Size	Material	Installation Method	AWG No. 6	AWG No. 10	2c #14	5c #14	3c #14	RADAR DET. CABLE
A	2	3"	PVC	EXISTING	3		3	2	2	5
B	1	2"	PVC	TRENCH		1		1		
C	1	3"	PVC	EXISTING		1	1	1	1	2
D	1	2"	PVC	TRENCH		1		1		
E	1	3"	PVC	EXISTING		1	1			2
F	1	1.5"	PVC	EXISTING		1			1	
G	1	3"	PVC	EXISTING		3	1			2
H	1	3"	PVC	EXISTING	3	3	1		1	1
I	1	3"	PVC	EXISTING	3	3	1			1



GALLATIN COUNTY STATE OF MONTANA	17092_02_SIGNAL_PROD.dwg 10/23/2020 3:45 PM BMB/CMK	DESIGNED BY BMB/CMK/JS/NL/JMC REVIEWED BY TRP/DS/MLF/DJC CHECKED BY TRP/DS/MLF/DJC
-------------------------------------	--	--

ELECTRICAL PLAN SHEET
GALLATIN COUNTY, MADISON COUNTY

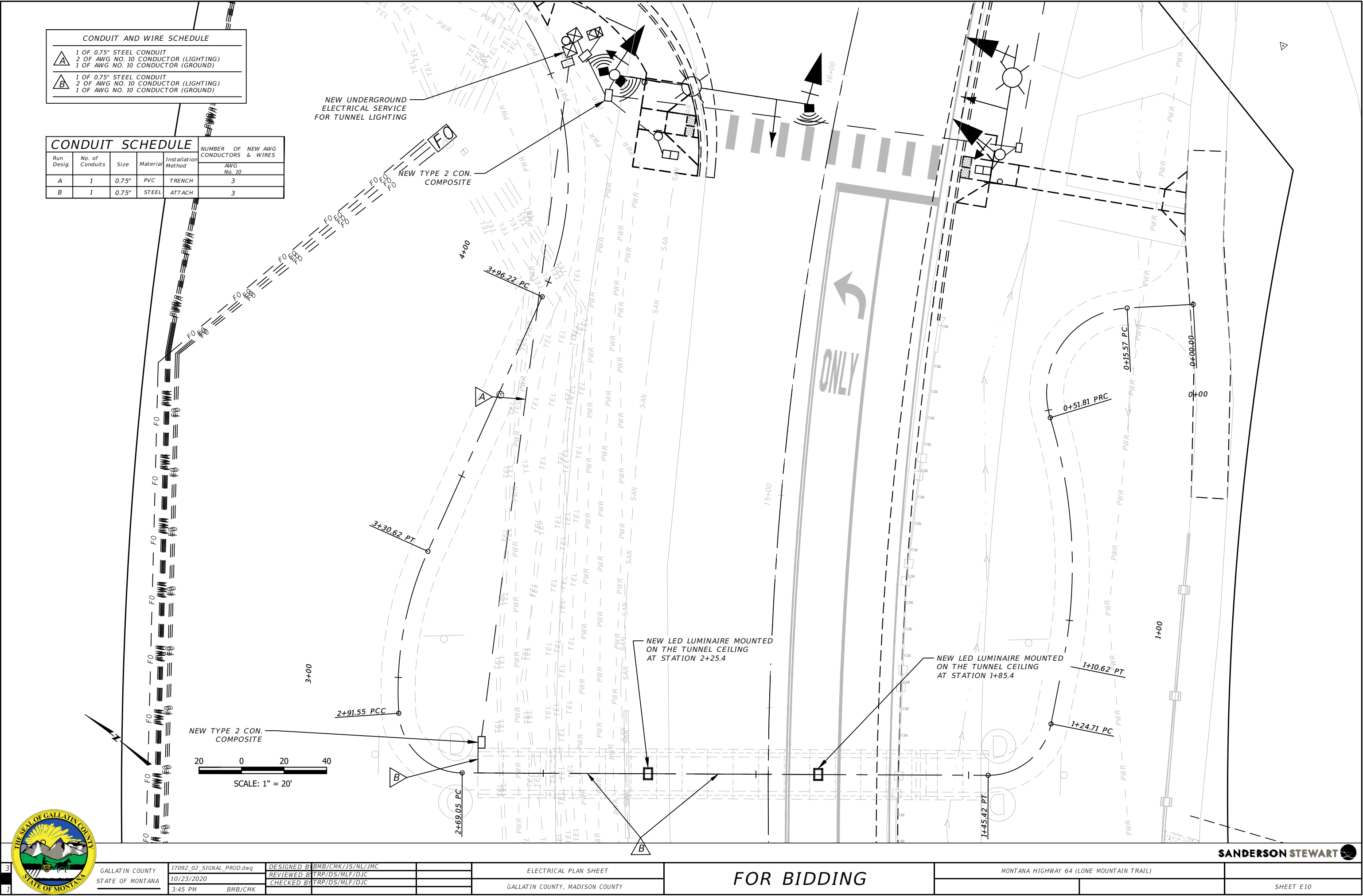
FOR BIDDING

MONTANA HIGHWAY 64 (LONE MOUNTAIN TRAIL)

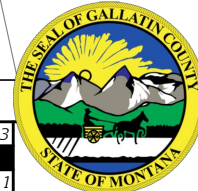
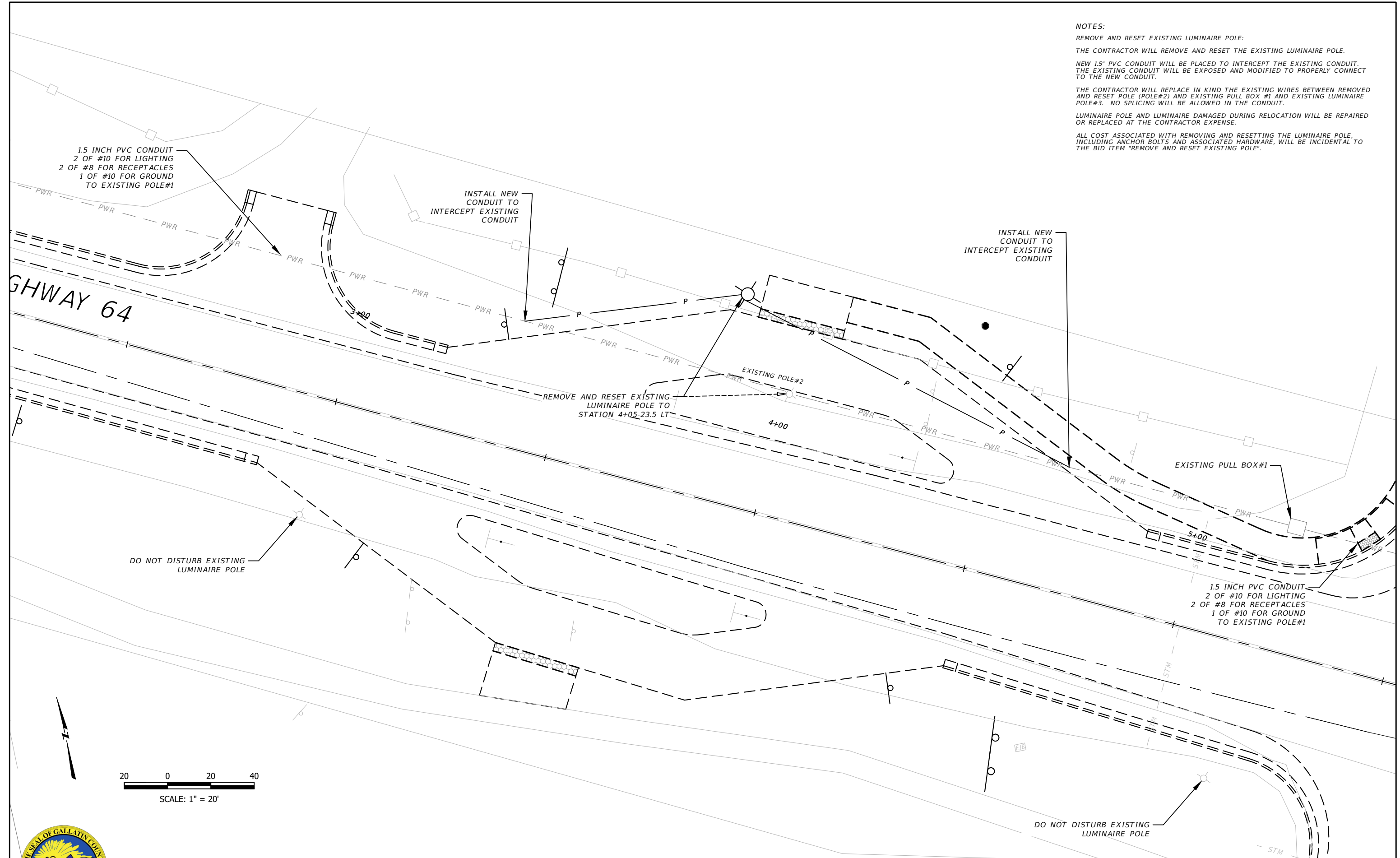
SANDERSON STEWART

CONDUIT AND WIRE SCHEDULE		
A	1 OF 0.75" STEEL CONDUIT 2 OF AWG NO. 10 CONDUCTOR (LIGHTING) 1 OF AWG NO. 10 CONDUCTOR (GROUND)	
B	1 OF 0.75" STEEL CONDUIT 2 OF AWG NO. 10 CONDUCTOR (LIGHTING) 1 OF AWG NO. 10 CONDUCTOR (GROUND)	

CONDUIT SCHEDULE					
Run Desig.	No. of Conduits	Size	Material	Installation Method	NUMBER OF NEW AWG CONDUCTORS & WIRES
A	1	0.75"	PVC	TRENCH	AWG No. 10
B	1	0.75"	STEEL	ATTACH	3



NOTES:
REMOVE AND RESET EXISTING LUMINAIRE POLE:
THE CONTRACTOR WILL REMOVE AND RESET THE EXISTING LUMINAIRE POLE.
NEW 1.5" PVC CONDUIT WILL BE PLACED TO INTERCEPT THE EXISTING CONDUIT.
THE EXISTING CONDUIT WILL BE EXPOSED AND MODIFIED TO PROPERLY CONNECT TO THE NEW CONDUIT.
THE CONTRACTOR WILL REPLACE IN KIND THE EXISTING WIRES BETWEEN REMOVED AND RESET POLE (POLE#2) AND EXISTING PULL BOX #1 AND EXISTING LUMINAIRE POLE#3. NO SPLICING WILL BE ALLOWED IN THE CONDUIT.
LUMINAIRE POLE AND LUMINAIRE DAMAGED DURING RELOCATION WILL BE REPAIRED OR REPLACED AT THE CONTRACTOR EXPENSE.
ALL COST ASSOCIATED WITH REMOVING AND RESETTING THE LUMINAIRE POLE, INCLUDING ANCHOR BOLTS AND ASSOCIATED HARDWARE, WILL BE INCIDENTAL TO THE BID ITEM "REMOVE AND RESET EXISTING POLE".



GALLATIN COUNTY STATE OF MONTANA	17092_02_SIGNAL_PROD.dwg 10/23/2020 3:45 PM BMB/CMK	DESIGNED BY BMB/CMK/JS/NL/JMC REVIEWED BY TRP/DS/MLF/DJC CHECKED BY TRP/DS/MLF/DJC
-------------------------------------	--	--

ELECTRICAL PLAN SHEET GALLATIN COUNTY, MADISON COUNTY
--

FOR BIDDING

MONTANA HIGHWAY 64 (LONE MOUNTAIN TRAIL)
--

SANDERSON STEWART

SHEET E11