

## Appendix C: Public Outreach Process Detail

### Part 7. User Group Survey

#### Purpose:

In the interest of providing the most efficient support to users of area recreation facilities a survey of user groups was undertaken. The results helped to inform the County's priorities and establish feasibility and need.

#### Research Design:

The questions were designed to gather information about the times when facilities were being used, the costs associated with each use, and the need for improvement to the facilities used.

#### Sampling:

102 surveys were sent to various user groups throughout the county, as established by lists kept by Play It Again Sports, the Info.Bozeman site, and general knowledge. Of the 102 sent, 51 were started and 35 completed for a 68.63% completion rate. The User Group Survey was fielded on 2010-04-06. An invitation to take the survey was mailed out to approximately 100 people, and about 36 took the survey. The survey was administered using QuestionPro online. This allowed users to submit their responses securely online. Listed below are the key findings.

#### Survey Statistics

Viewed	6
Started	51
Completed	35
Completion Rate	68.63%
Drop Outs (After Starting)	16
Average time taken to complete survey : 10 minute(s)	

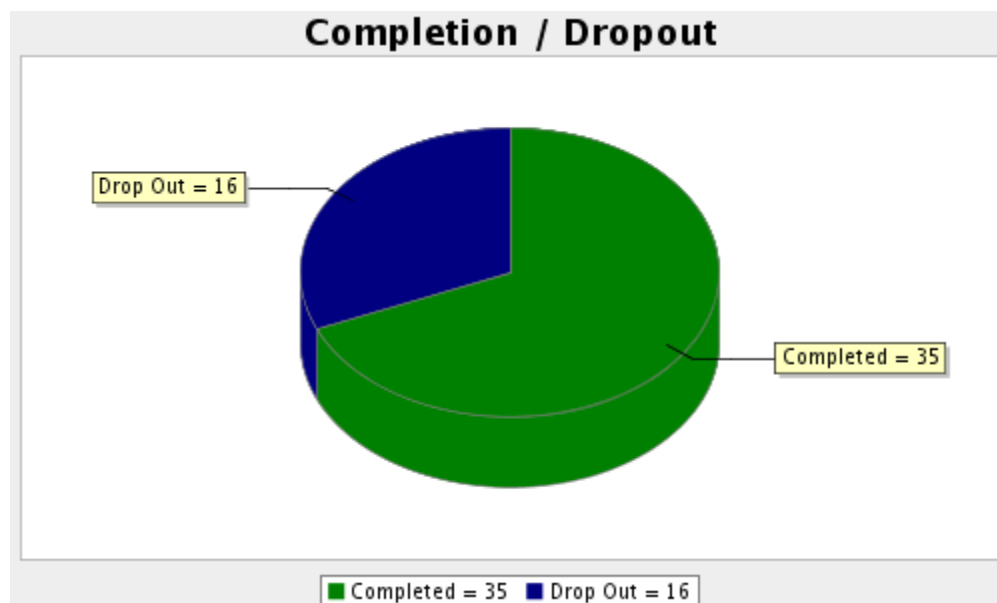
#### User groups name:

Gallatin Valley YMCA  
Bozeman City League Basketball  
Big Sky Hikers  
Bozeman Ultimate Frisbee  
Bozeman Girls Fastpitch and Bozeman Stealers Fastpitch  
Fast Pitch Softball  
GALLEP  
Bozeman Recreation District  
MSU Cycling  
Montana Conservation Corps  
Bozeman Stingrays  
Gallatin County Extension - 4-H

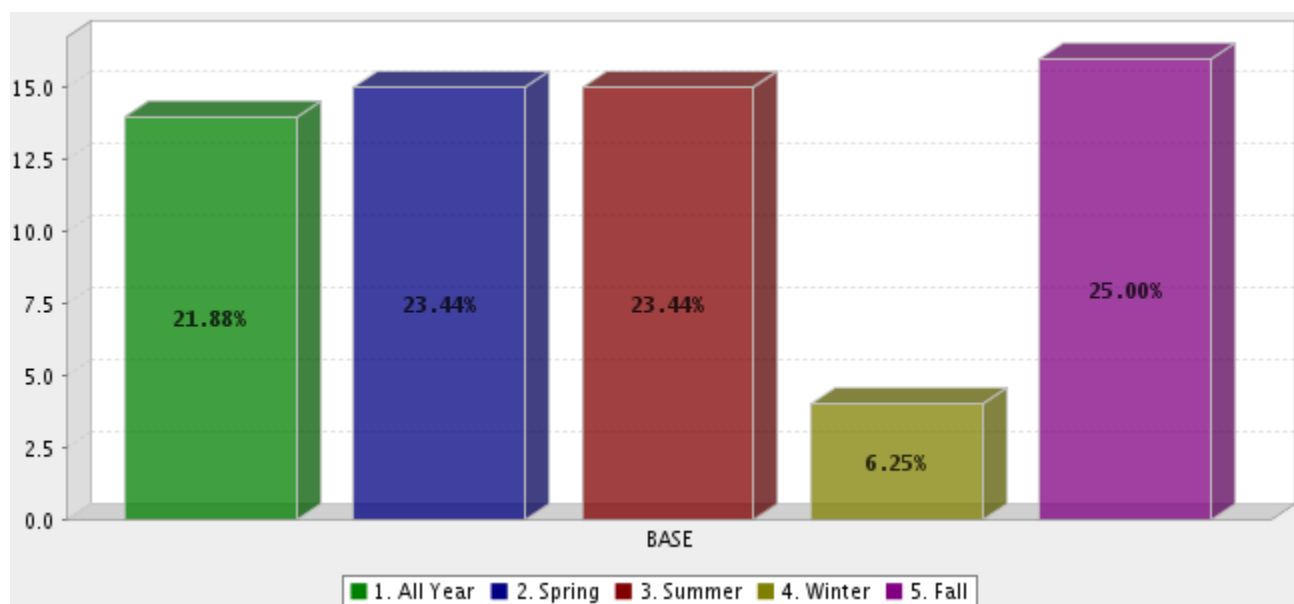
## Appendix C: Public Outreach Process Detail

Bozeman Cutthroat Rugby  
Bozeman Stealers Fastpitch,  
Bozeman Girls Fastpitch Softball Rec-League  
Bozeman Hockey  
Bozeman Barracudas  
Gallatin valley skatepark  
BAHA  
Bozeman Boulder Initiative  
Vootie productions  
Bozeman Women's Activity Groups (BWAGs)  
Southwest Montana Climbers' Coalition  
Gallatin Valley BMX  
Big Sky Wind Drinkers  
Gallatin Valley Land Trust  
Montana Mountain Bike Alliance  
The Dirt Concern of GVBC  
Ice and Rock Climbers, represented by the SW Montana Climbers Coalition  
Bozeman Senior Center  
Bozeman Area Bicycle Advisory Group. Cyclists  
Blitz Micro Soccer  
Bozeman Adult Soccer league  
Tony Garibaldi

## Survey Overview

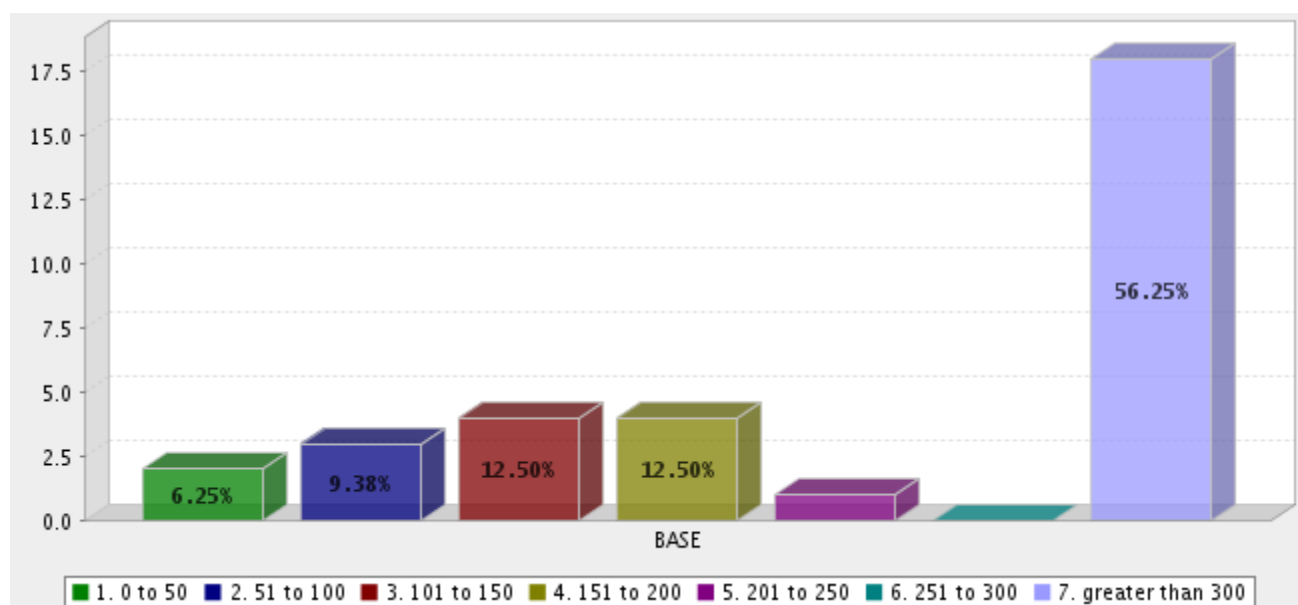


What times of the year do your participants use facilities?

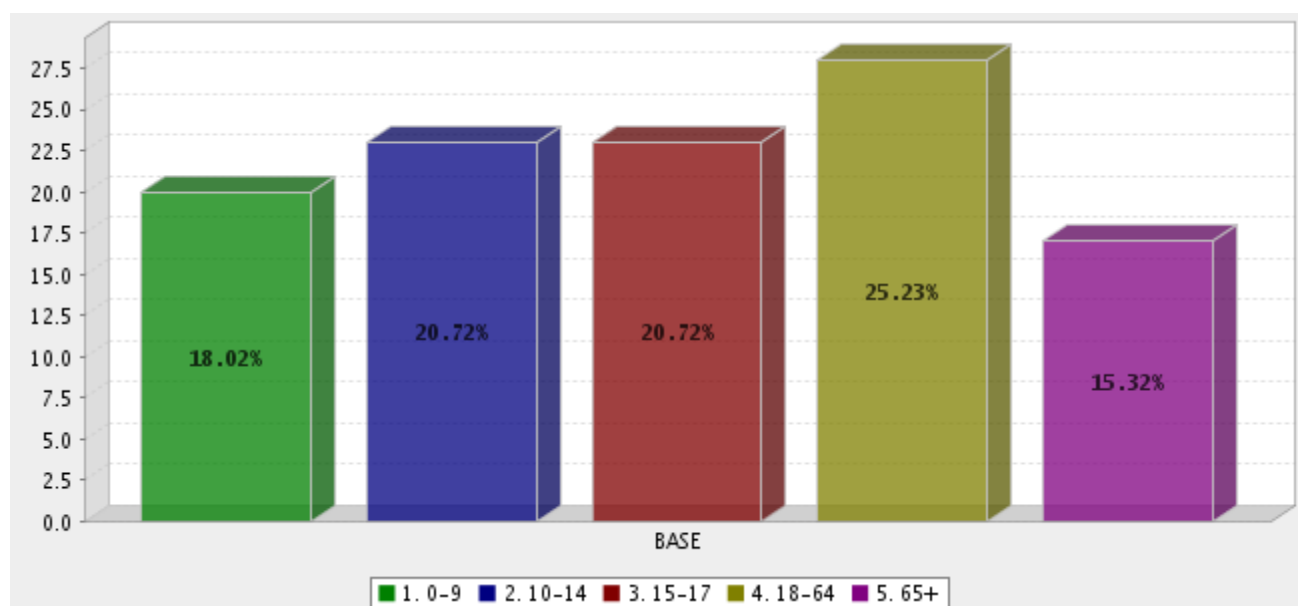


## Appendix C: Public Outreach Process Detail

### Number of participants in your program?

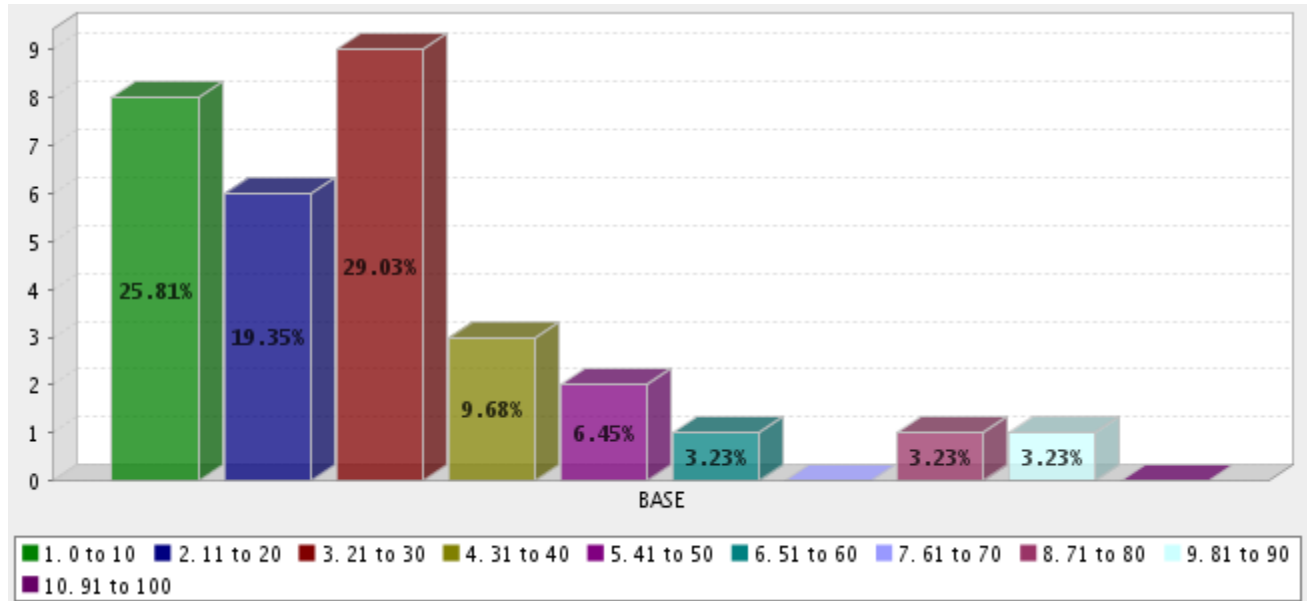


### Ages served by your program:

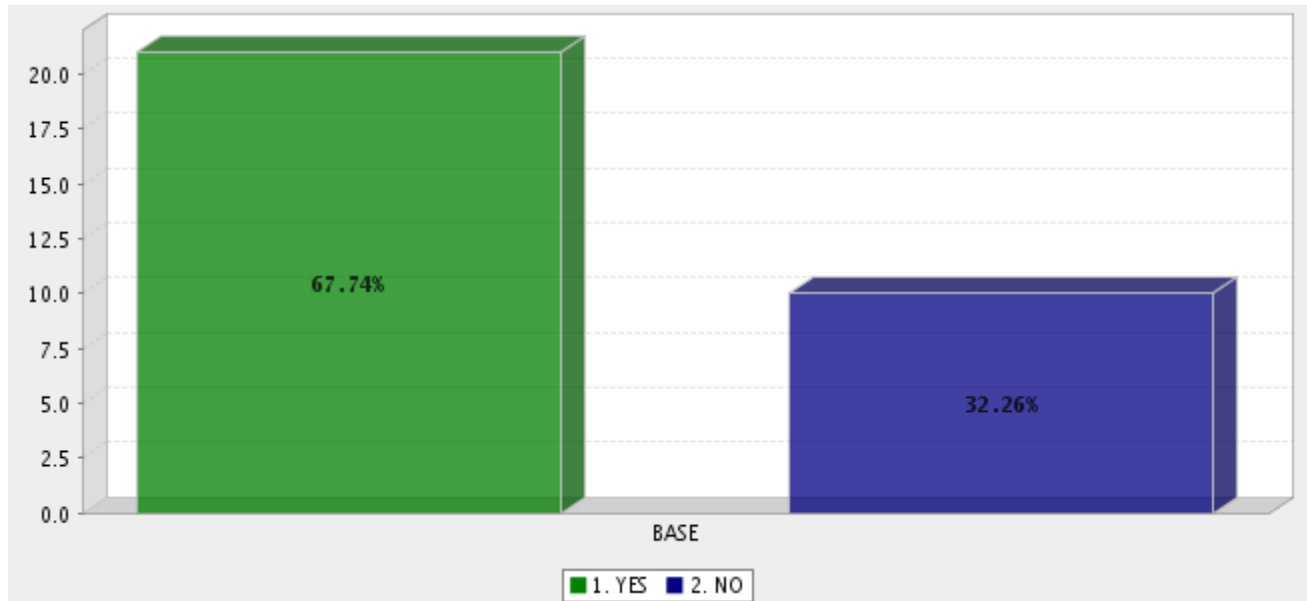


## Appendix C: Public Outreach Process Detail

**What estimated percentage of your participants live outside of an incorporated city or town?**

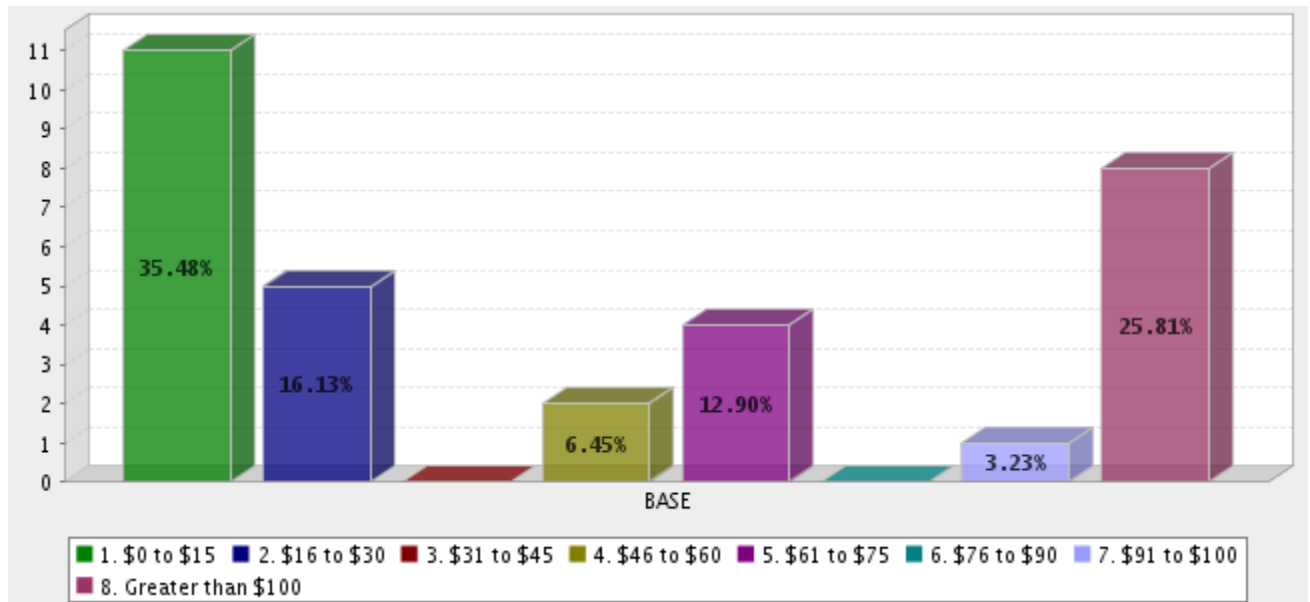


**Is there a fee to participate?**

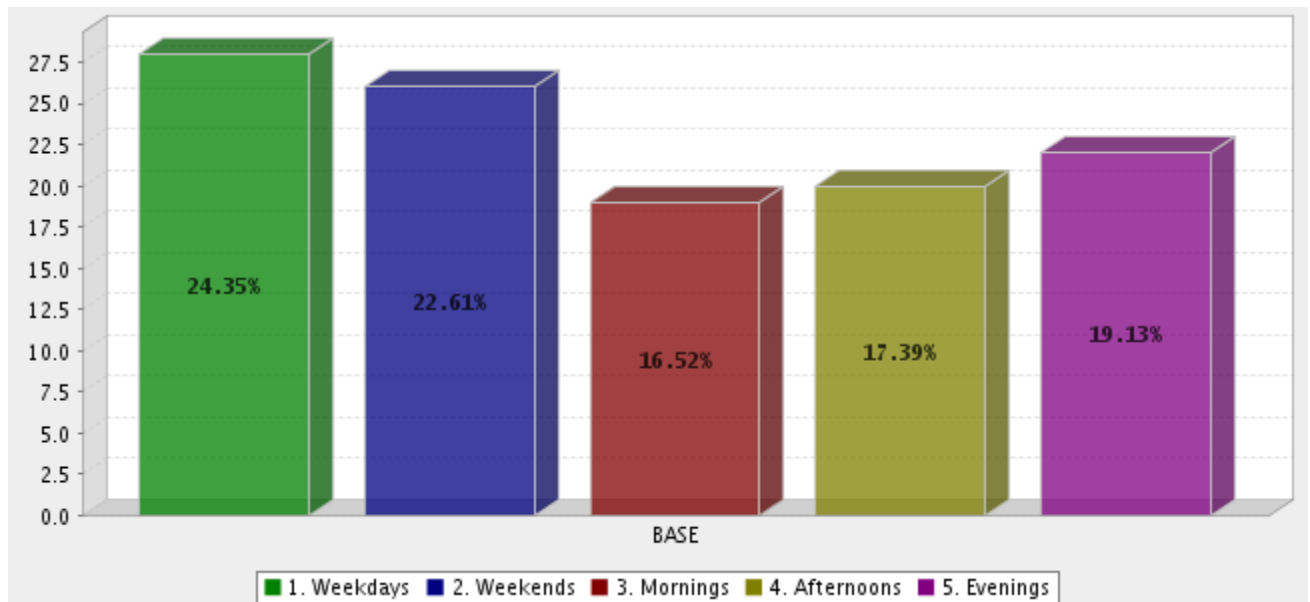


## Appendix C: Public Outreach Process Detail

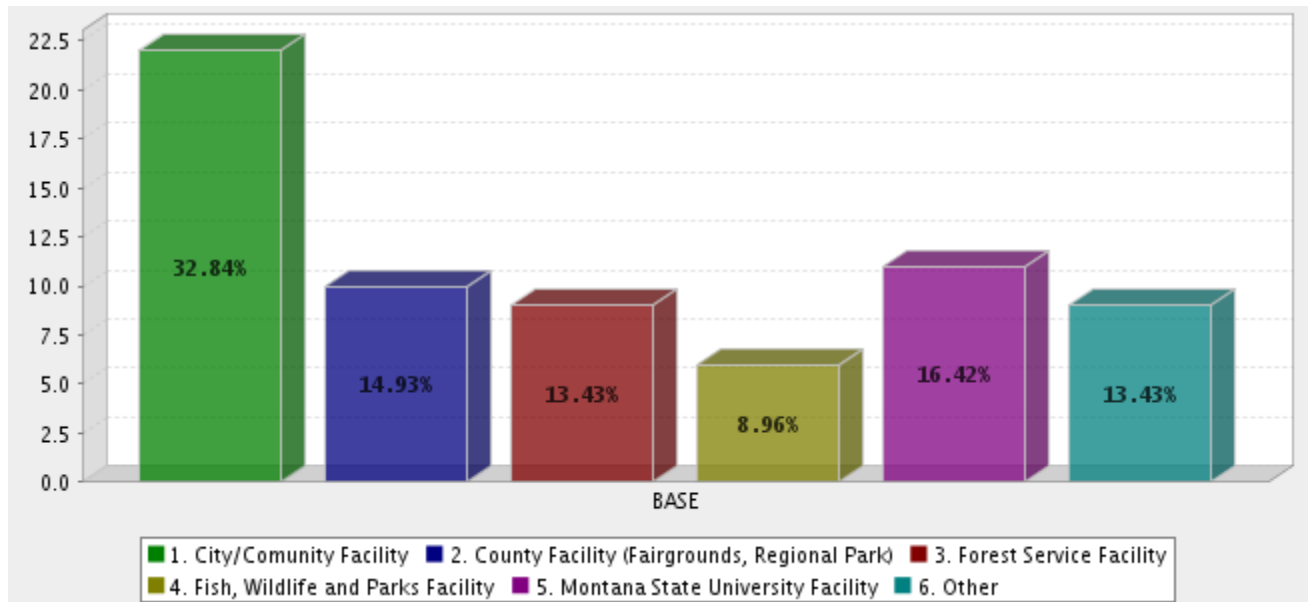
What is the annual estimated cost per person for participating in your program?



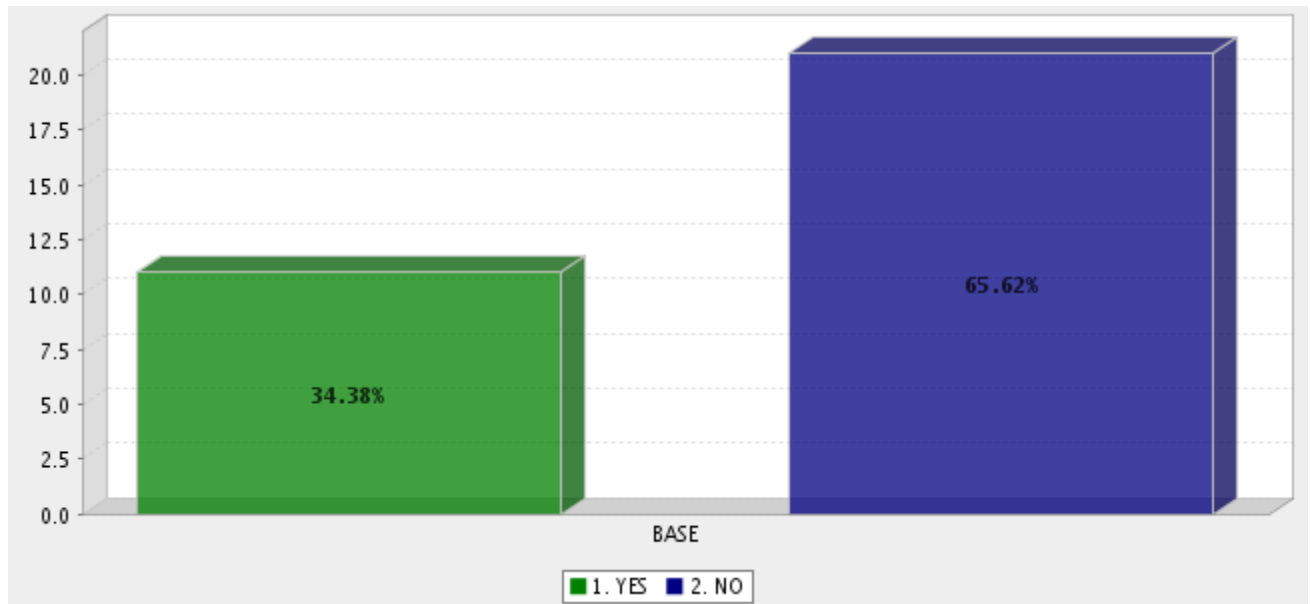
What times of the week does your program meet? (mark all that apply)



Where are the facilities located that your group uses?

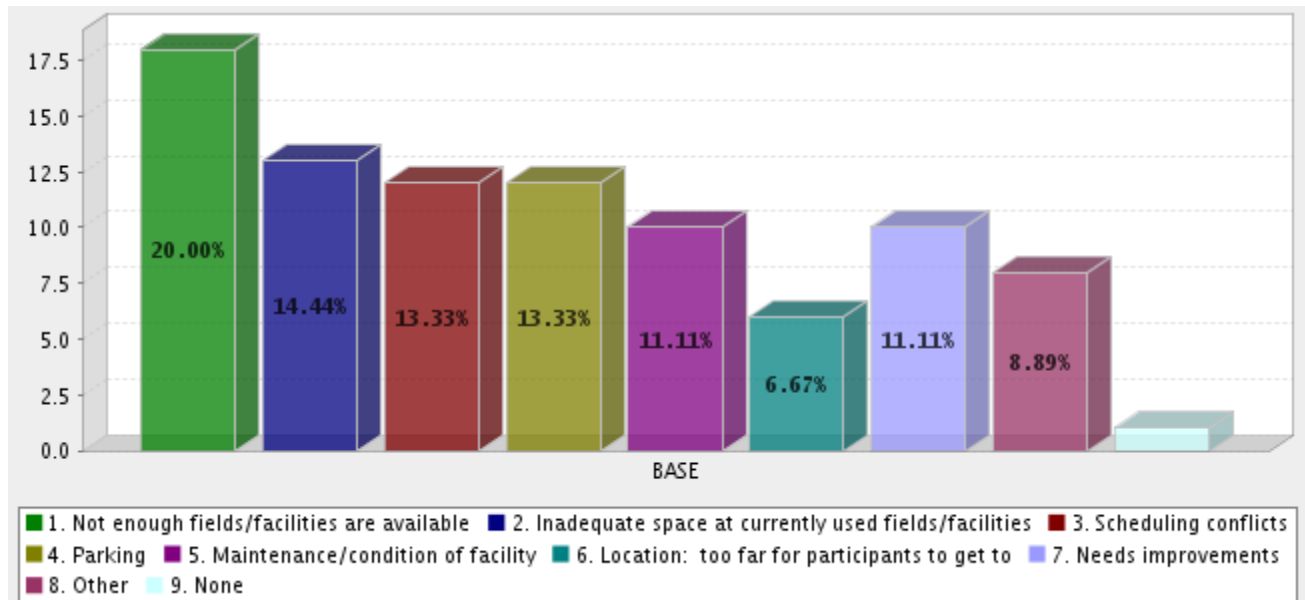


Are the recreation facilities used by your group adequate to meet the needs of your participants?

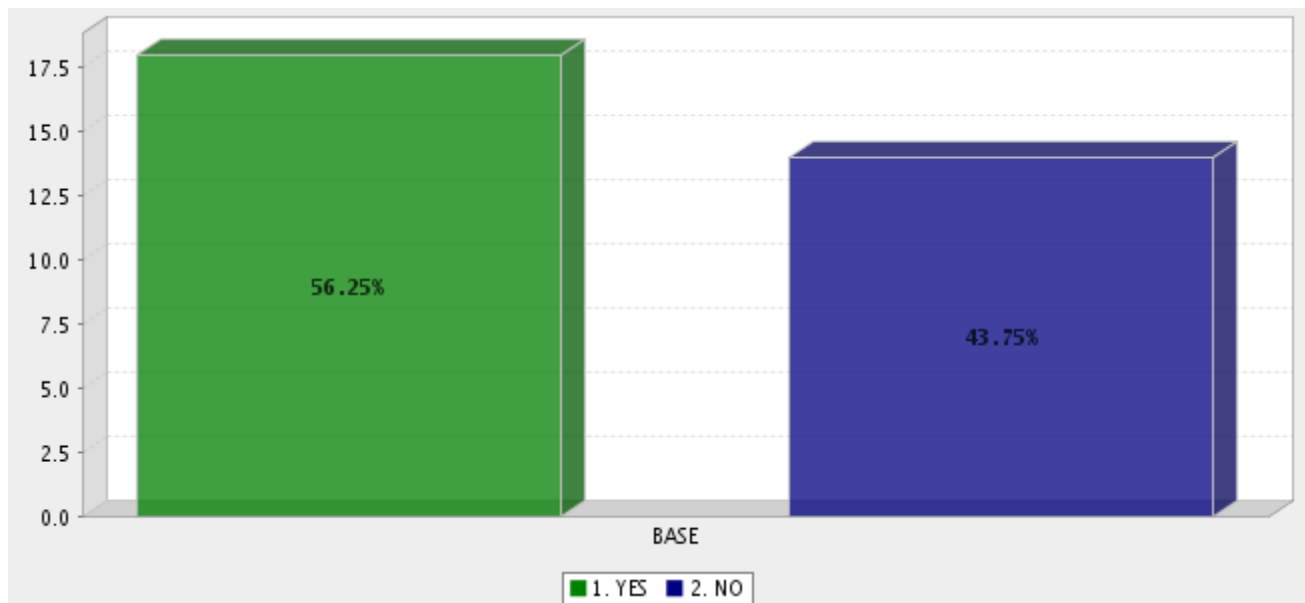


## Appendix C: Public Outreach Process Detail

Of the following what do you consider makes the facilities inadequate:



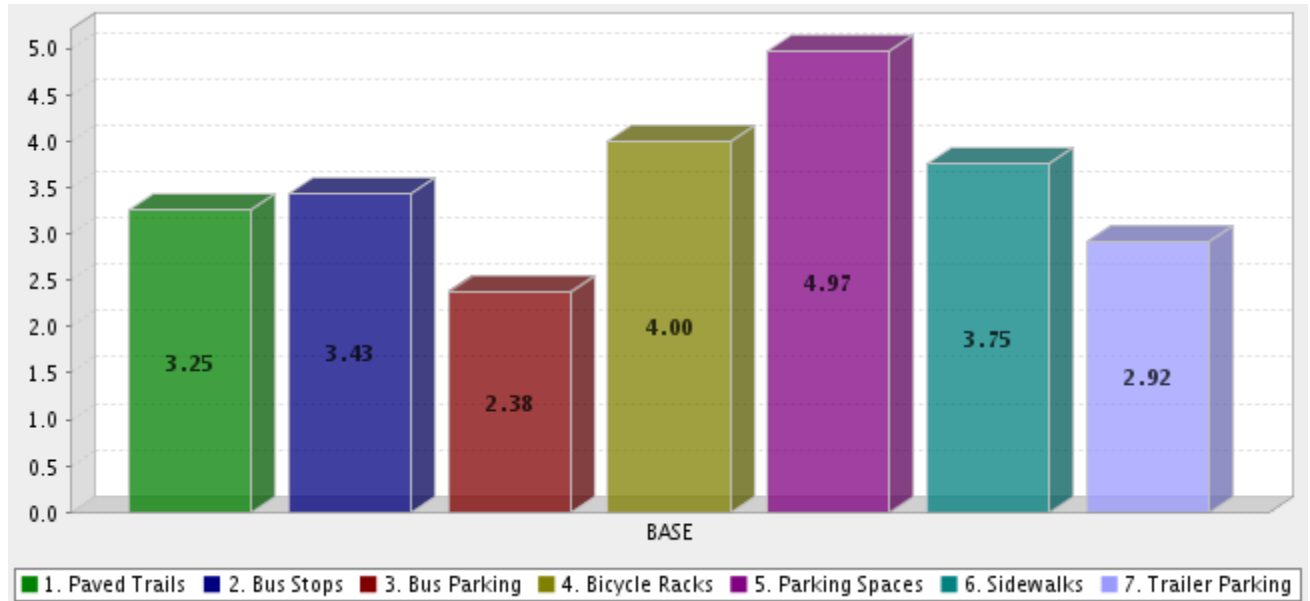
Thinking of families attending these events, is it important to have other recreational facilities (i.e., playgrounds etc.) available during your events?



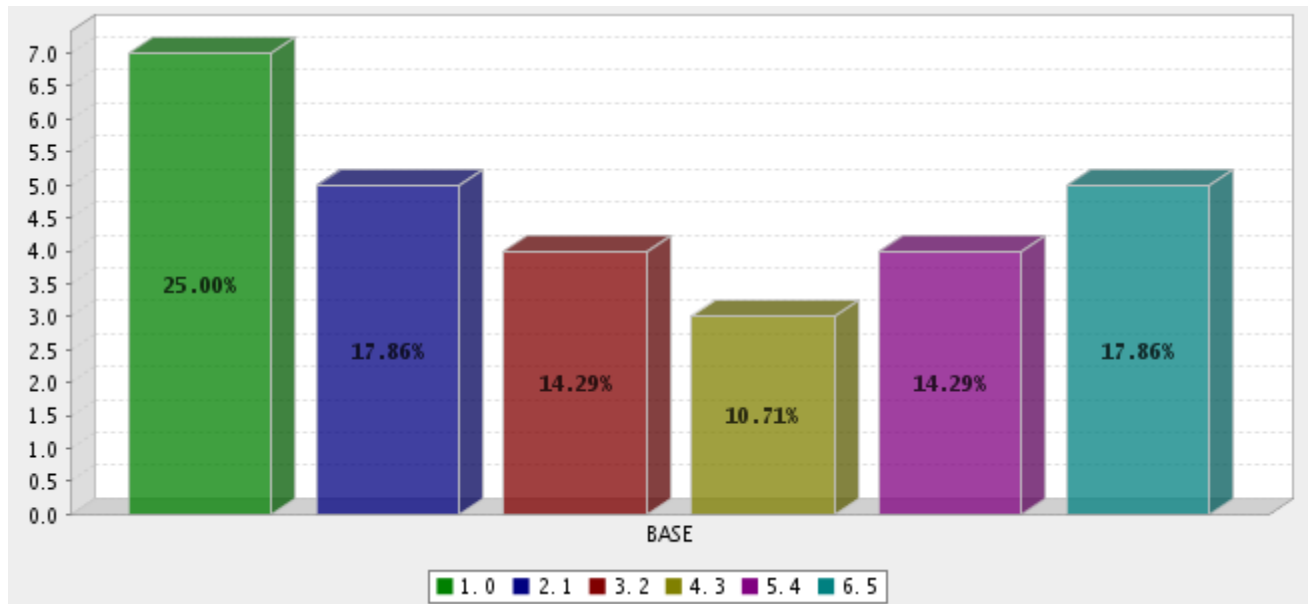


## Appendix C: Public Outreach Process Detail

Thinking about transportation by participants to your events please rank the importance of the following transportation facilities?

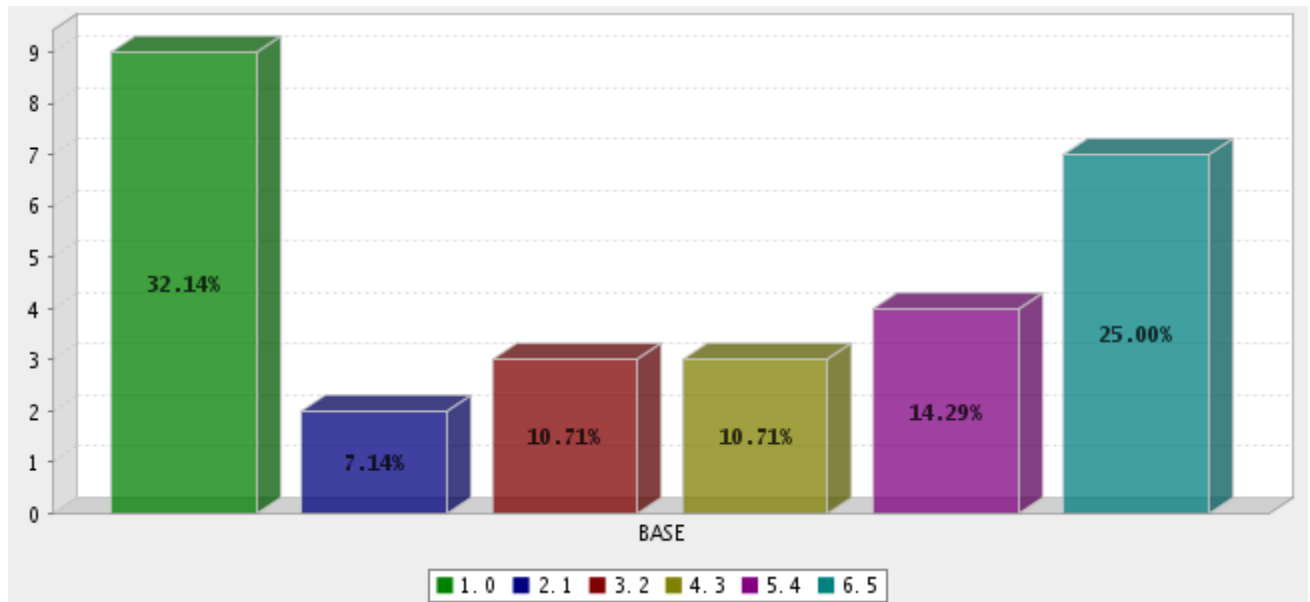


### Paved Trails

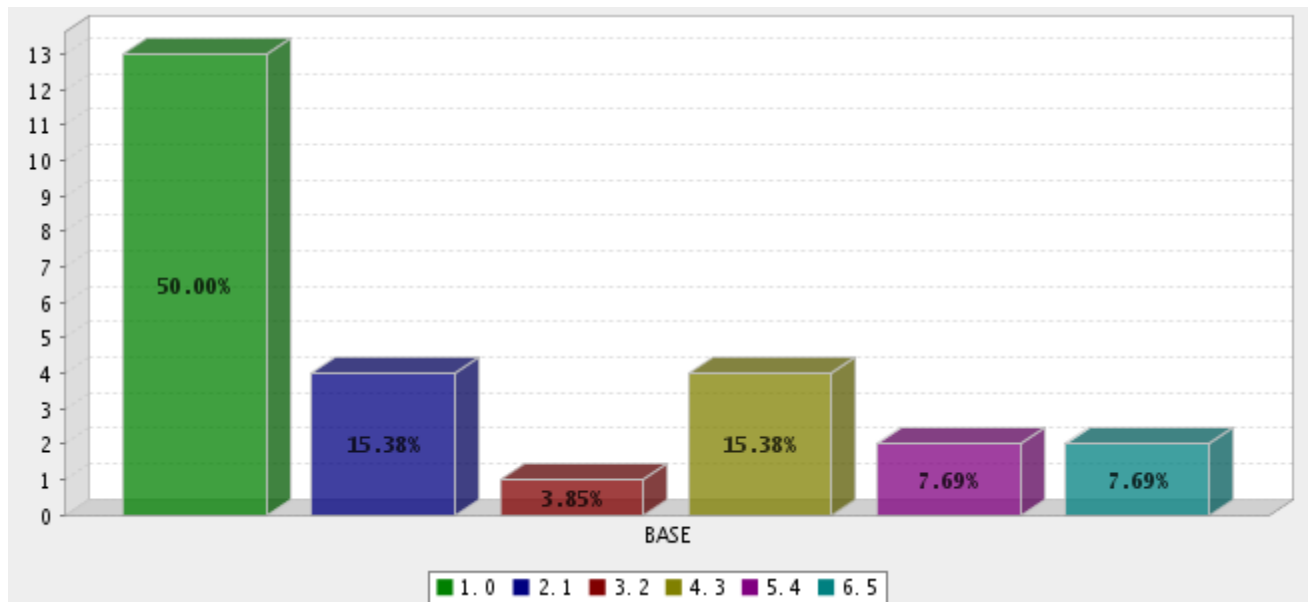


## Appendix C: Public Outreach Process Detail

### Bus Stops

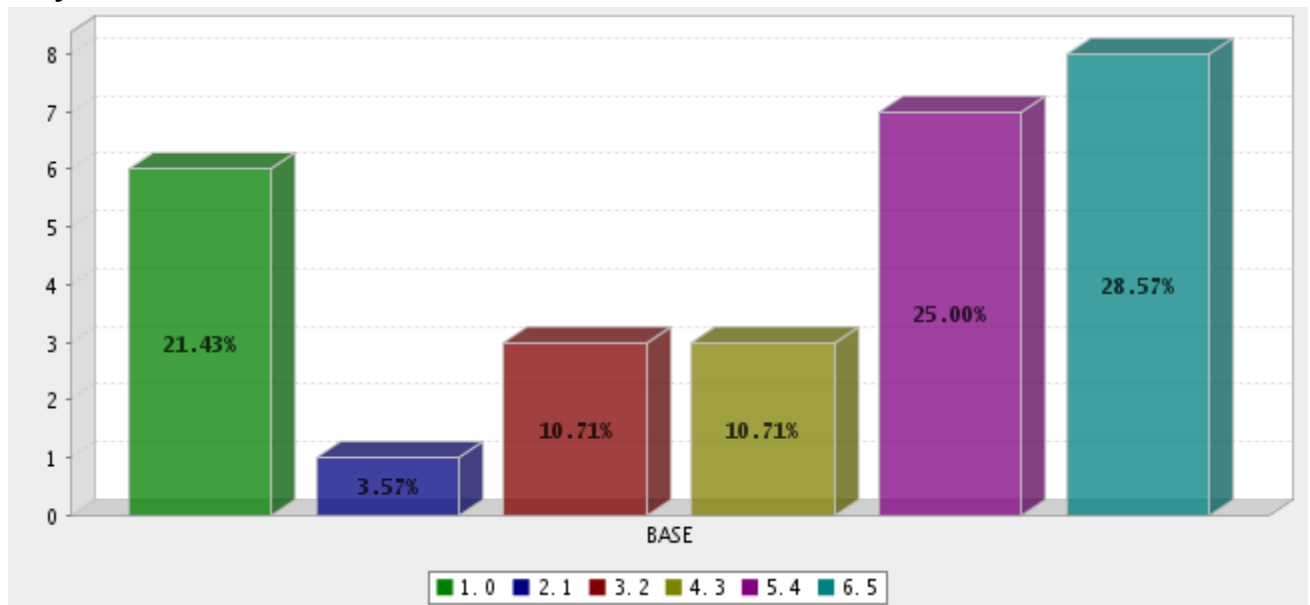


### Bus Parking

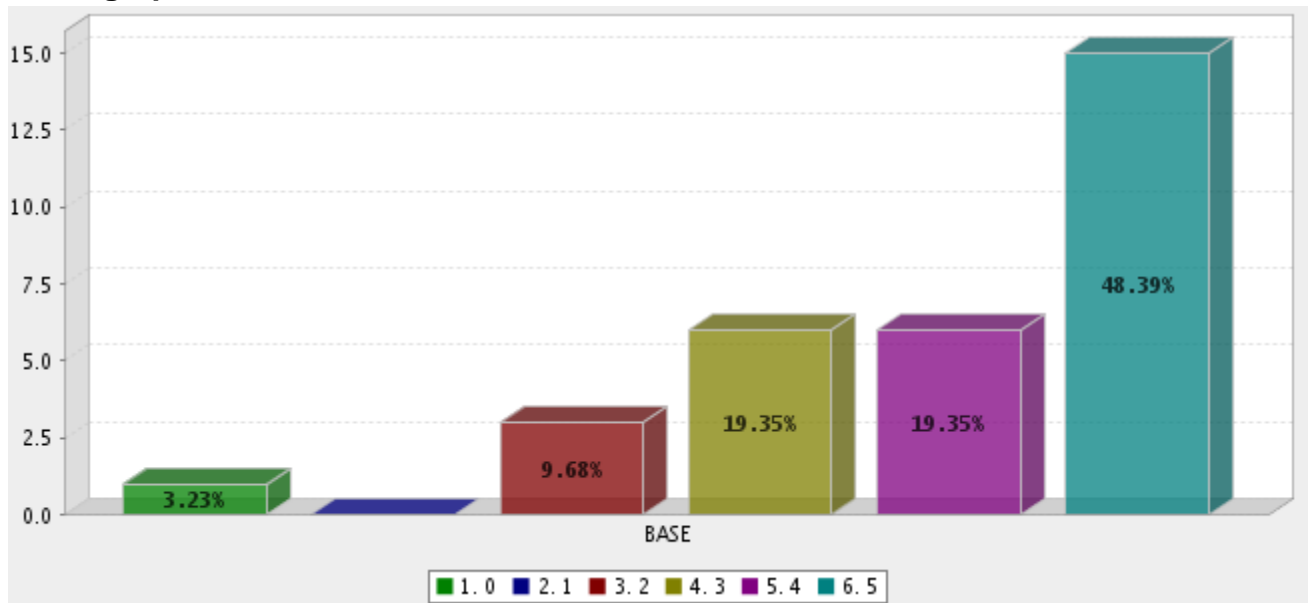


## Appendix C: Public Outreach Process Detail

### Bicycle Racks

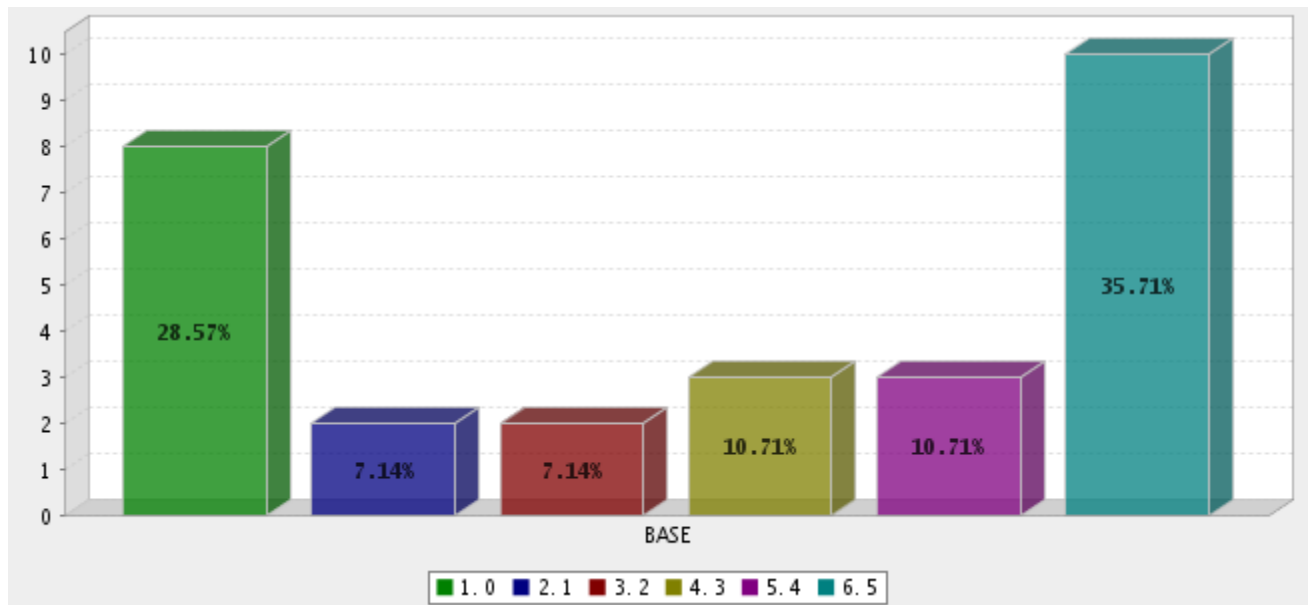


### Parking Spaces



## Appendix C: Public Outreach Process Detail

### Sidewalks



### Trailer Parking

